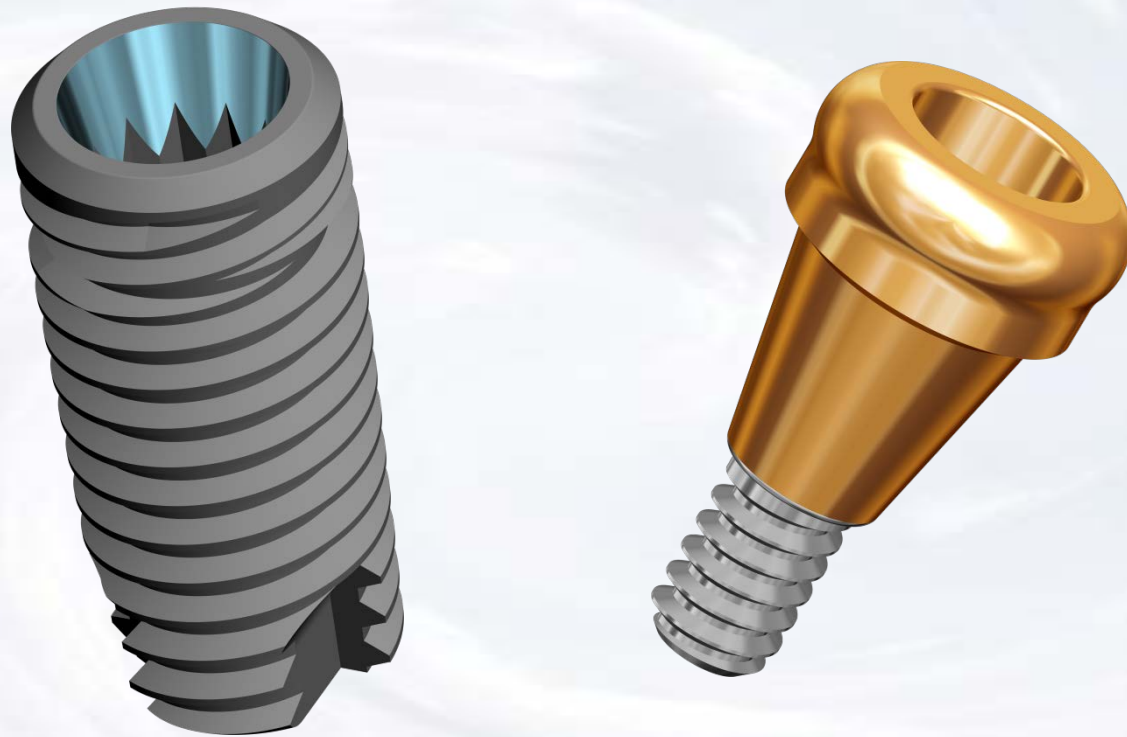


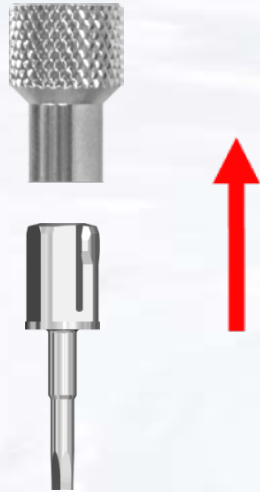
# Overdenture Laboratory Technique



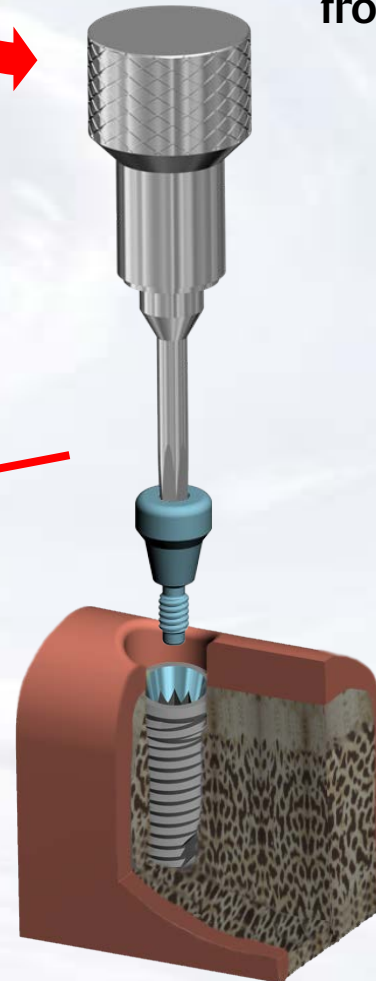
**Blue Sky Bio**

# Overdenture Laboratory Technique

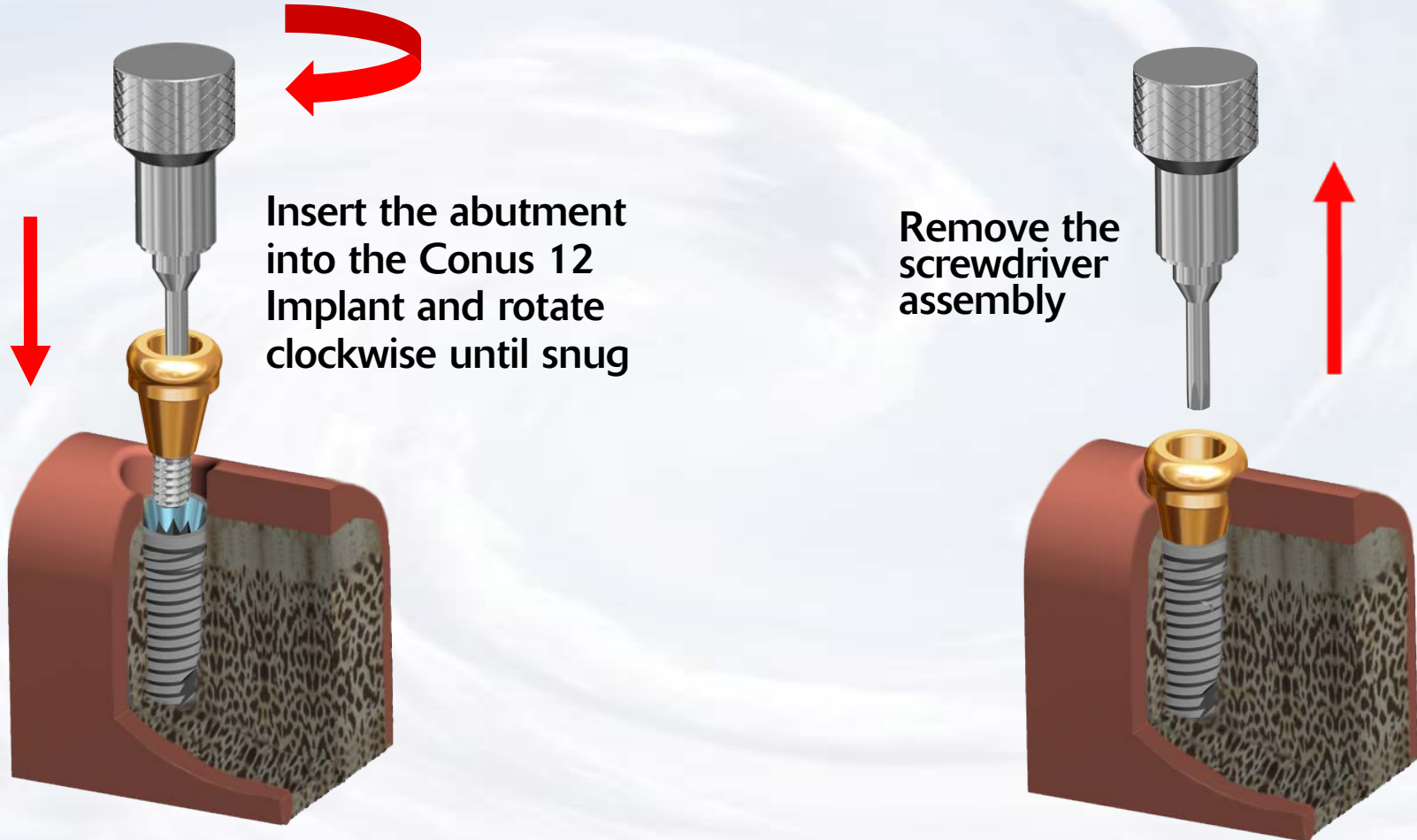
Assemble screw driver with  
Thumb Knob



Remove healing abutment  
from implant



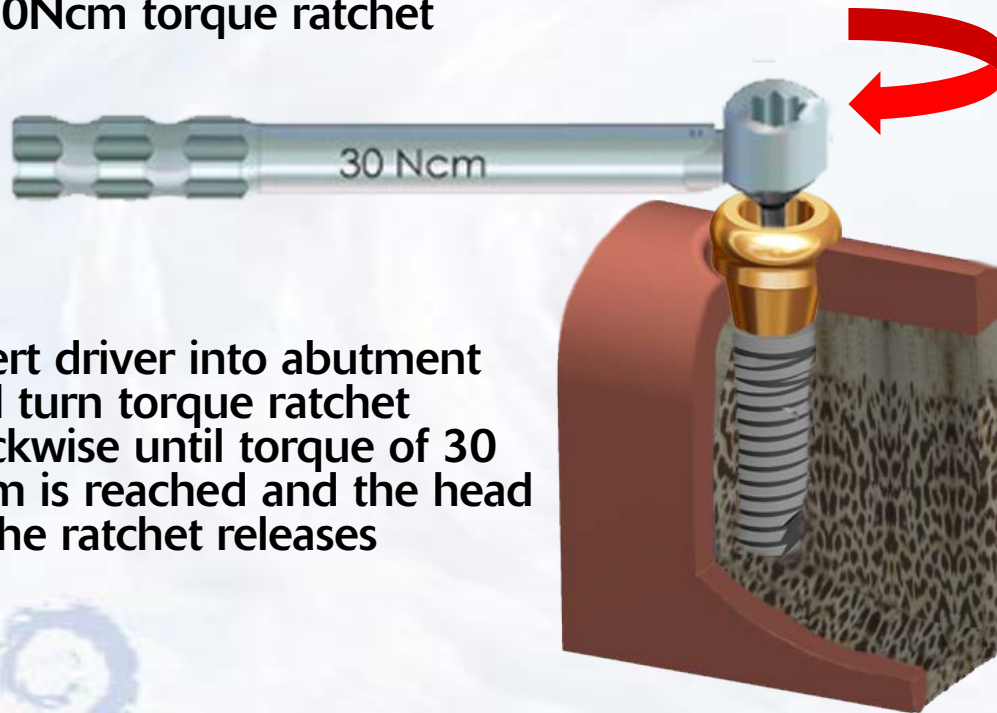
# Overdenture Laboratory Technique



# Overdenture Laboratory Technique



Insert the Hex Driver within the 30Ncm torque ratchet



Insert driver into abutment and turn torque ratchet clockwise until torque of 30 Ncm is reached and the head of the ratchet releases

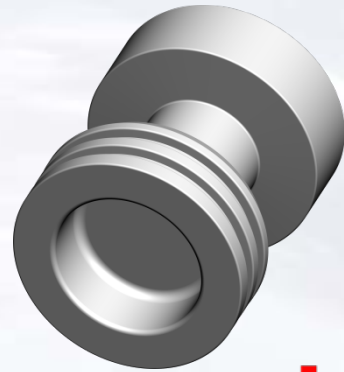


Abutments in place

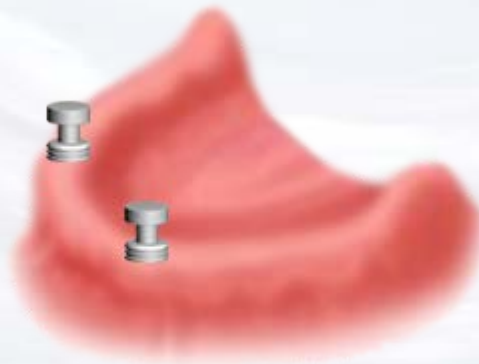


Blue Sky Bio

# Overdenture Laboratory Technique

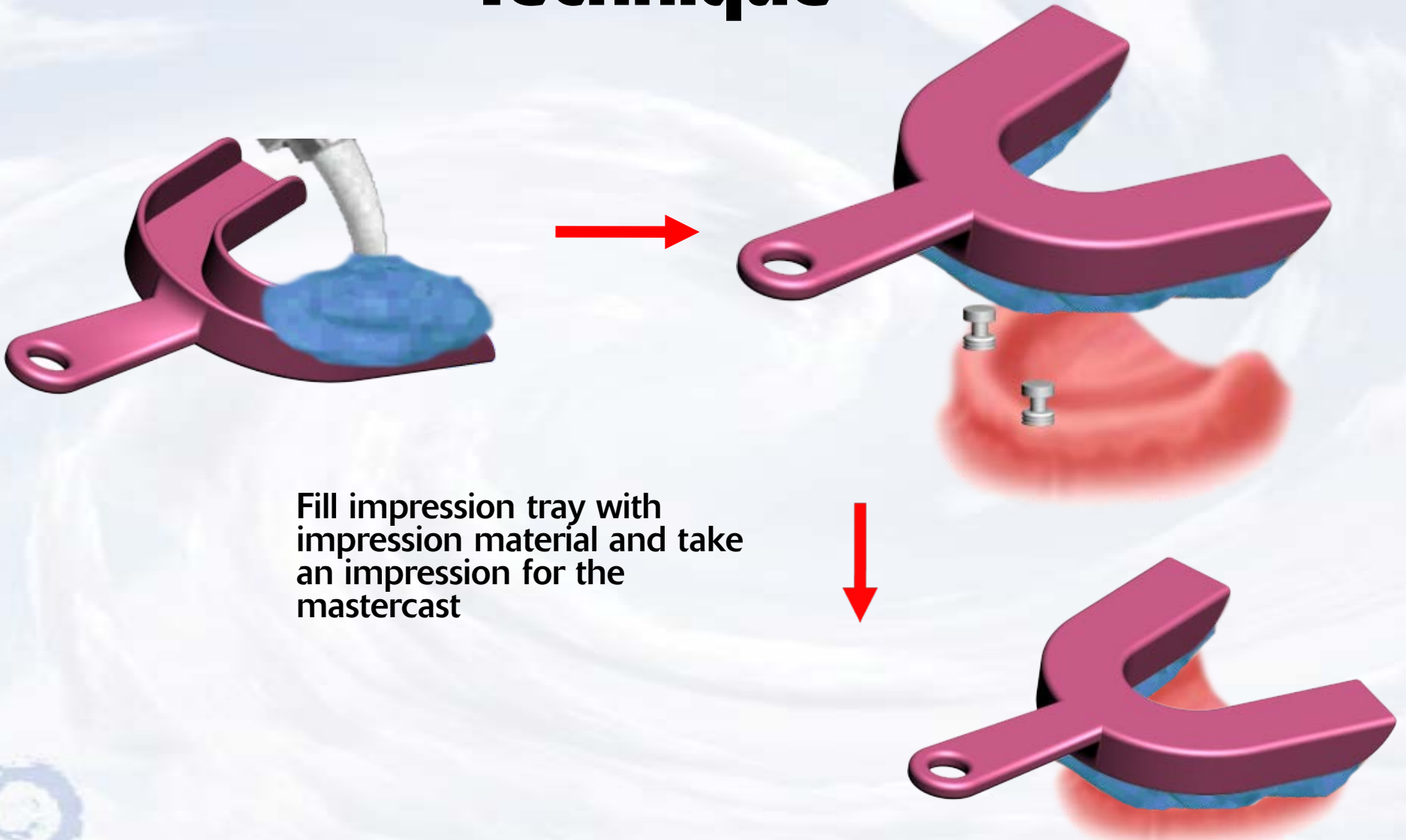


Snap impression transfer  
on the abutments



**Blue Sky Bio**

# Overdenture Laboratory Technique



Fill impression tray with impression material and take an impression for the mastercast



Blue Sky Bio

# Overdenture Laboratory Technique



After impression material has set remove impression from mouth picking up the impression transfers

Snap analogs into the impression transfers



**Blue Sky Bio**

# Overdenture Laboratory Technique



Pour impression with model stone and make master cast with analogs in place



Blue Sky Bio



# Overdenture Laboratory Technique



Place black processing insert  
on the insertion tool

Snap black processing insert  
into metal housing



Blue Sky Bio

# Overdenture Laboratory Technique



Place housings with processing insert on the analogs and process the denture



**Blue Sky Bio**

# Overdenture Laboratory Technique



Remove the black processing insert with the sharp point of the removal instrument



Place the insert with the desired retention into the housing



**Blue Sky Bio**

# Overdenture Laboratory Technique



Finished prosthesis with  
housings and inserts in place



**Blue Sky Bio**