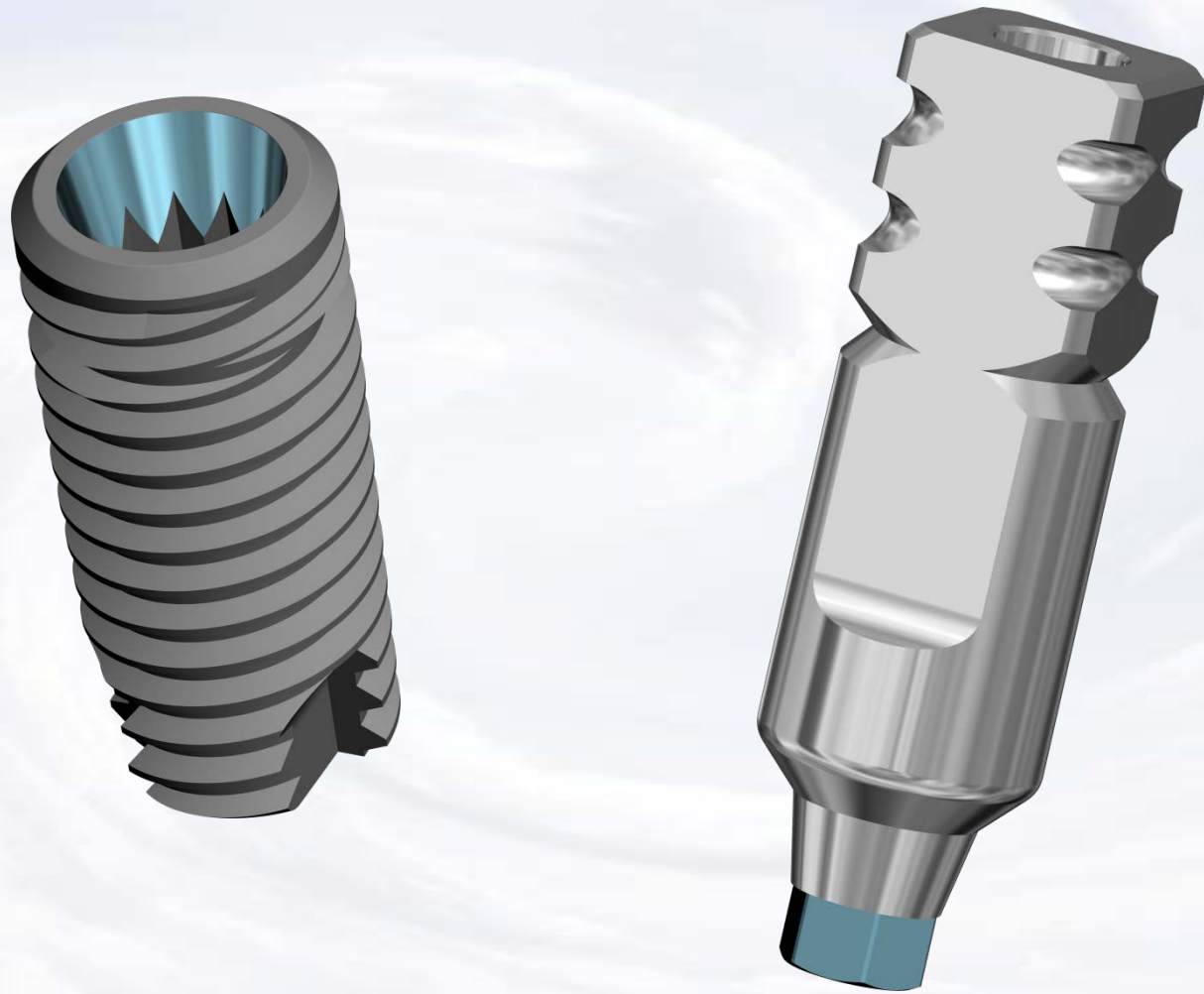


MPA Abutment for Conus Implant



Blue Sky Bio

MPA Abutment for Conus Implant

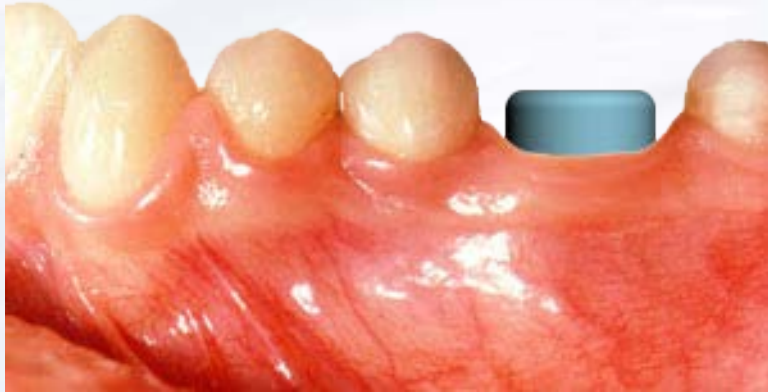


The MPA Abutment functions as both the implant level impression coping and the final abutment



Blue Sky Bio

MPA Abutment for Conus Implant



Choose matching abutment

Healing abutment in place

3.5/4.0 Platform Narrow Abutment



Size	Part #
MPA 3.5/4.0 Narrow Kit	KMPADH35
MPA 3.5/4.0 Narrow Abutment	MPADH35
3.5/4.0 Implant Level Analog	BDH35

3.5/4.0 Platform Regular Abutment



Size	Part #
MPA 3.5/4.0 Regular Kit	KMPADH40
MPA 3.5/4.0 Regular Abutment	MPADH40
3.5/4.0 Implant Level Analog	BDH35

4.5/5.0 Platform Abutment







Size	Part #
4.5/5.0 MPA Abutment Analog Kit	KMPADH50
4.5/5.0 MPA Abutment	MPADH50
4.5/5.0 Implant Level Analog	BDH50



Blue Sky Bio

MPA Abutment for Conus Implant

	Size	Part #
	.050 Hex Driver Short	SDS050
	.050 Hex Driver Long	SDL050
	Torque/Ratchet Wrench	TR-900-01
	Thumb Knob for Drivers	TK

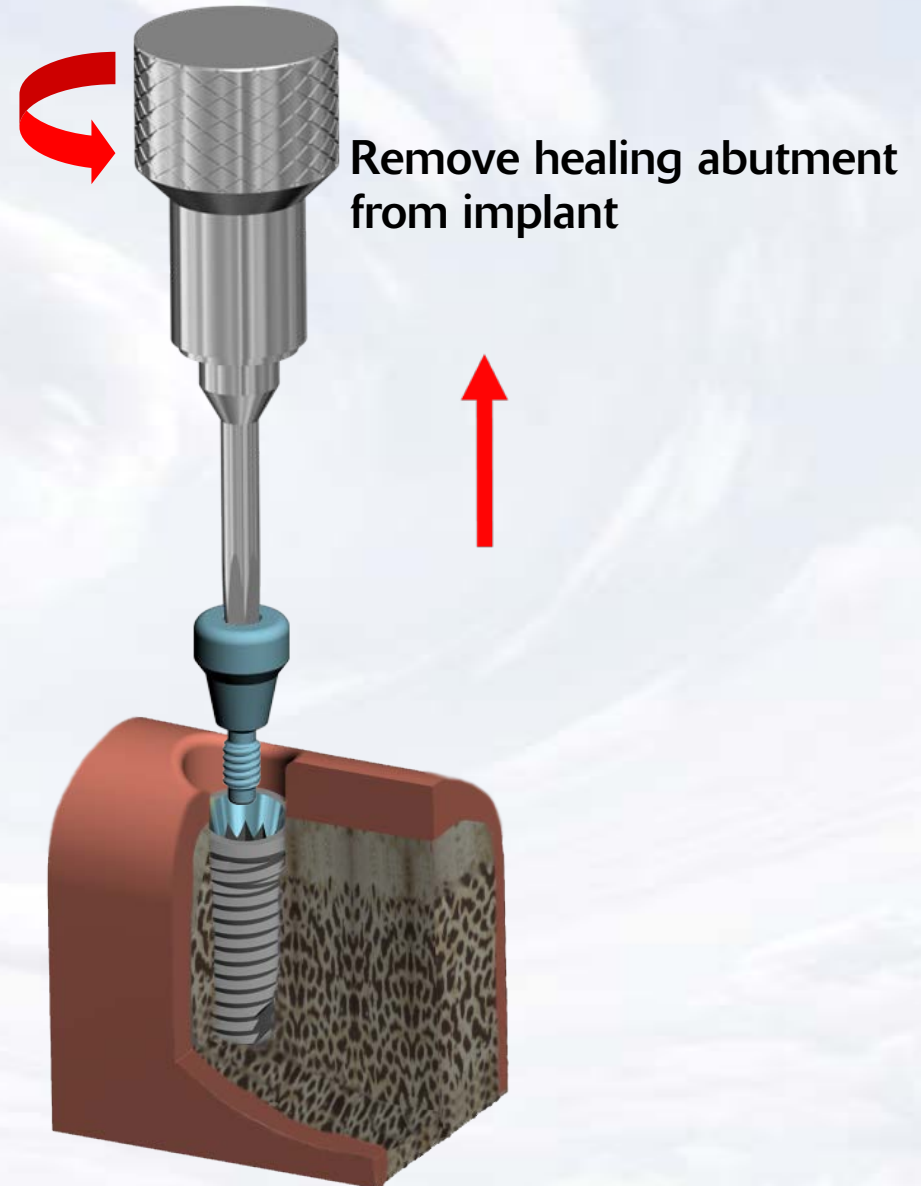
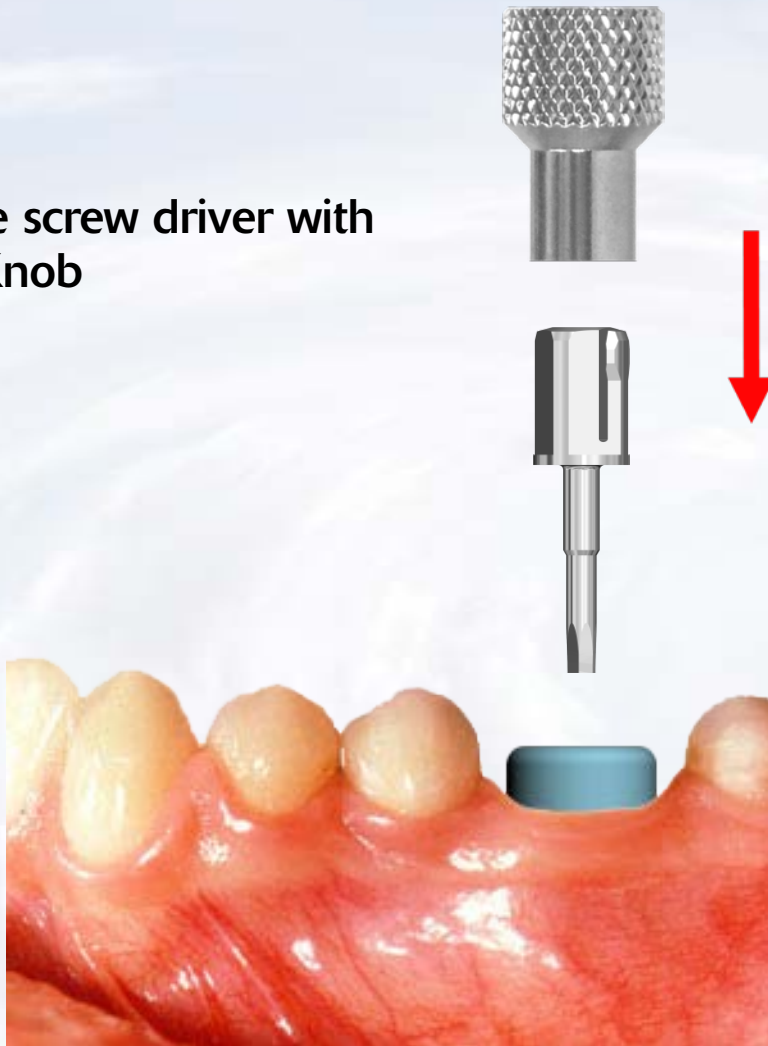
Prosthetic instruments needed



Blue Sky Bio

MPA Abutment for Conus Implant

Assemble screw driver with
Thumb Knob

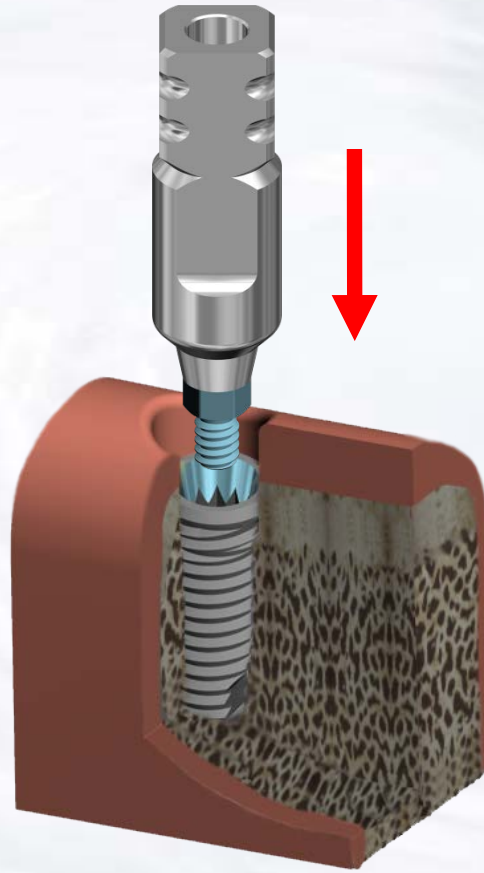
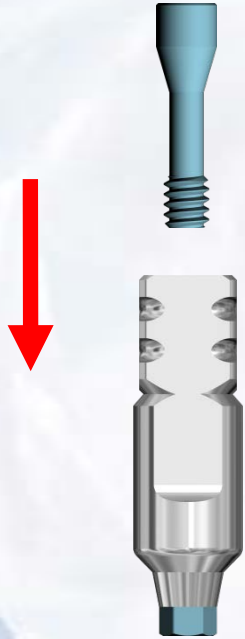


Blue Sky Bio

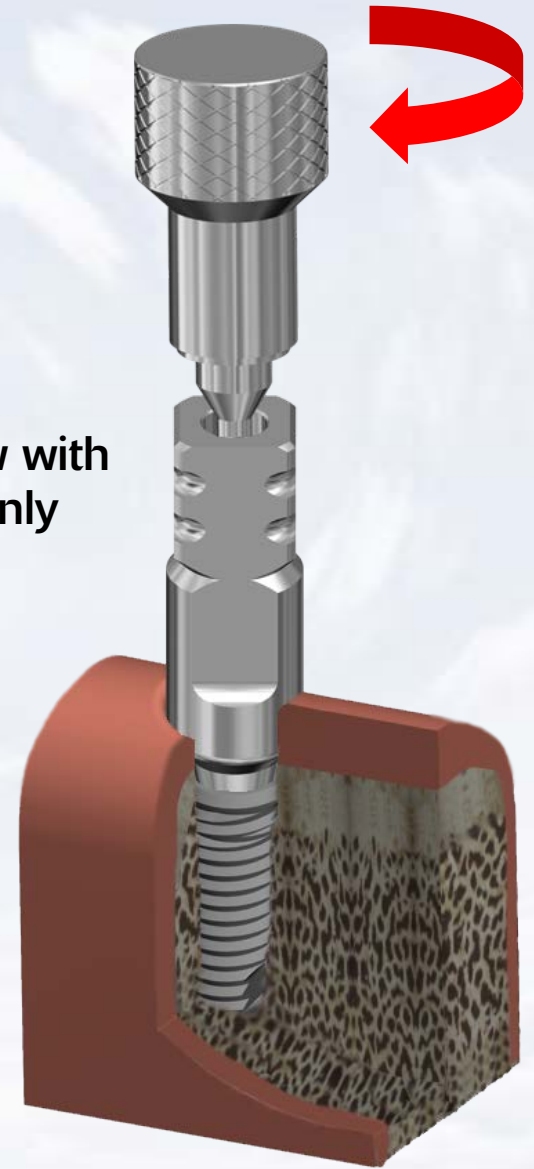
MPA Abutment for Conus Implant

Insert the MPA abutment into the implant ensuring the appropriate orientation

Insert screw into MPA abutment

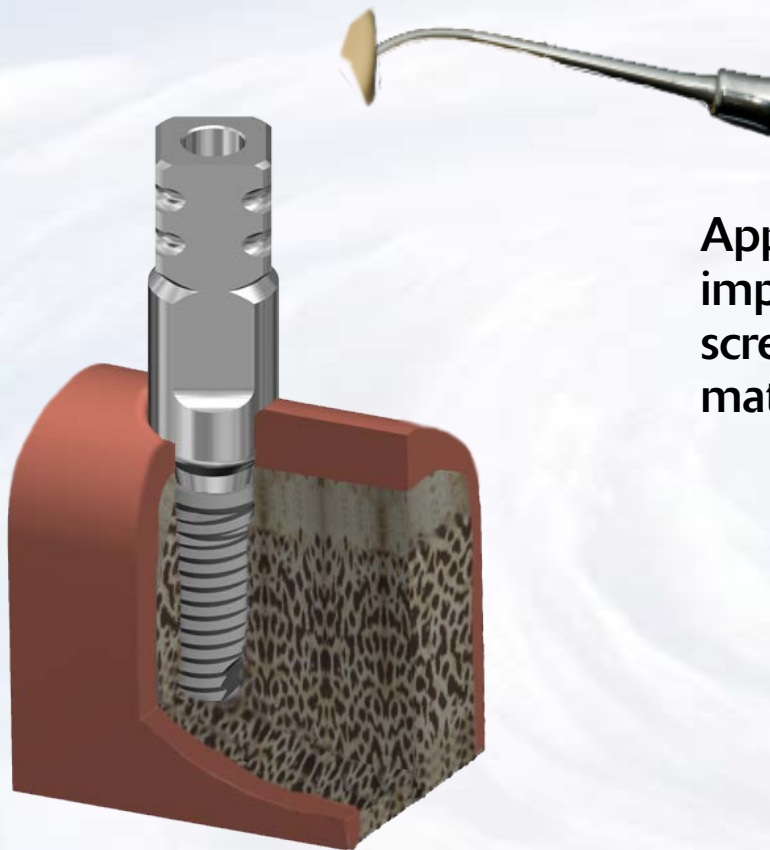


Tighten screw with finger force only

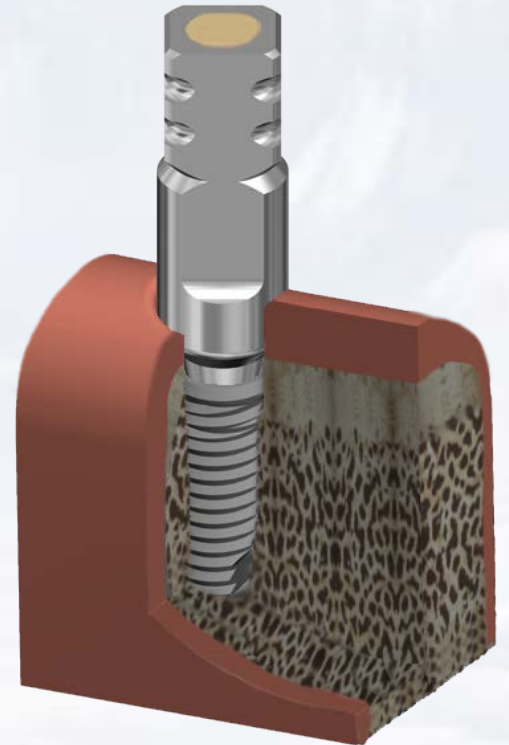


Blue Sky Bio

MPA Abutment for Conus Implant

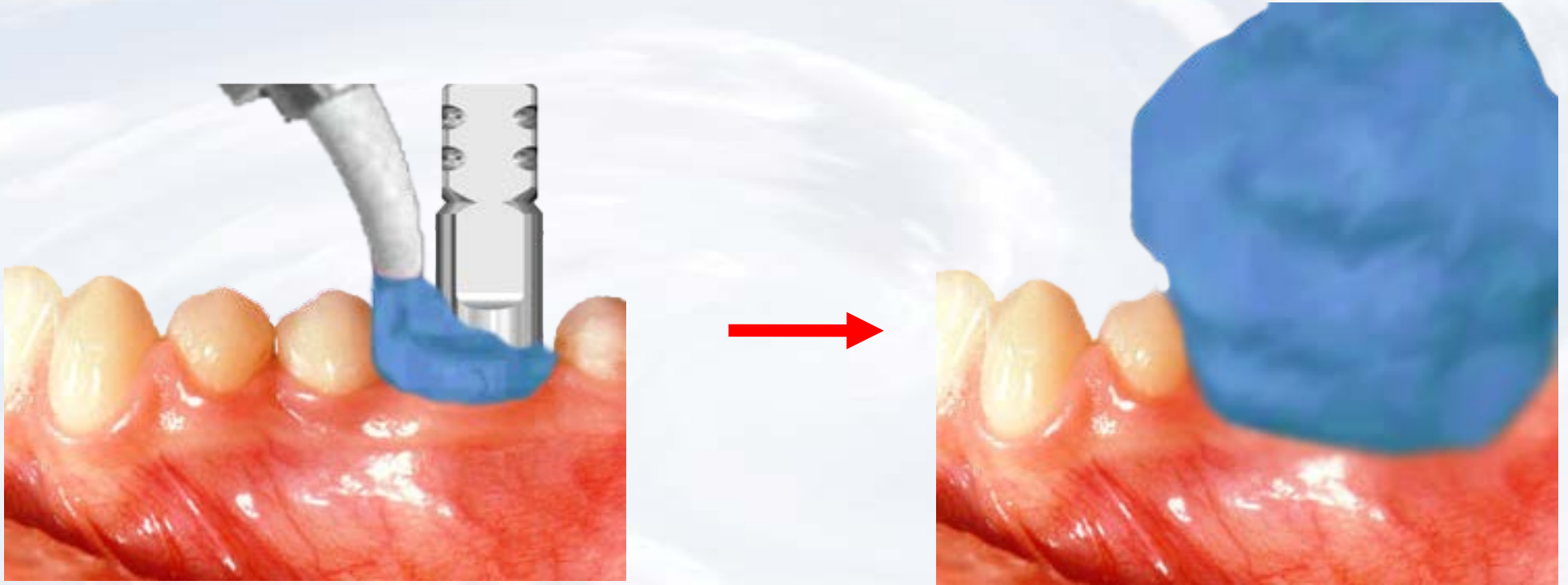


Apply wax to the top of the impression transfer to seal screw access to keep impression material out of the access hole



Blue Sky Bio

MPA Abutment for Conus Implant

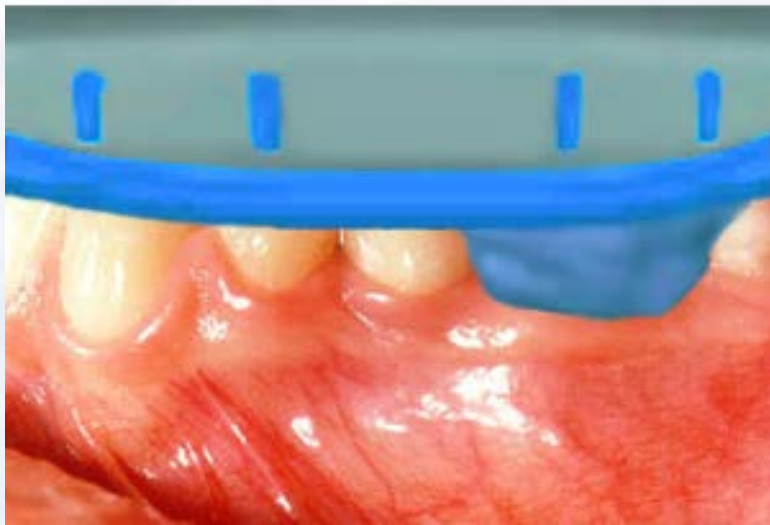


Inject impression material around the abutment

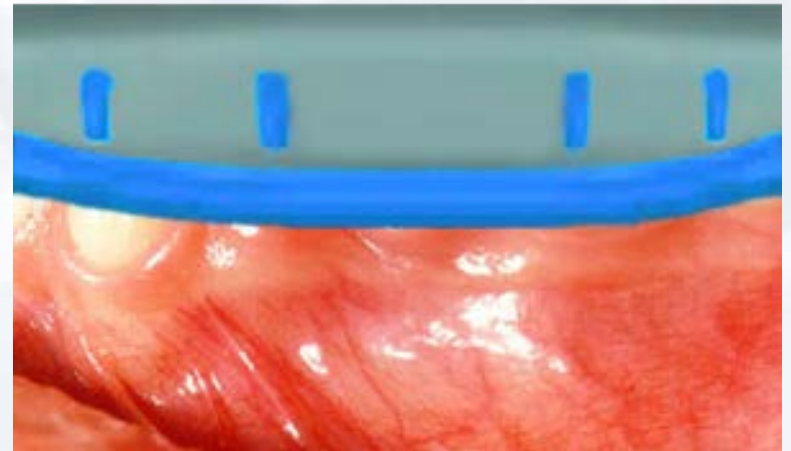


Blue Sky Bio

MPA Abutment for Conus Implant



Insert tray with impression material

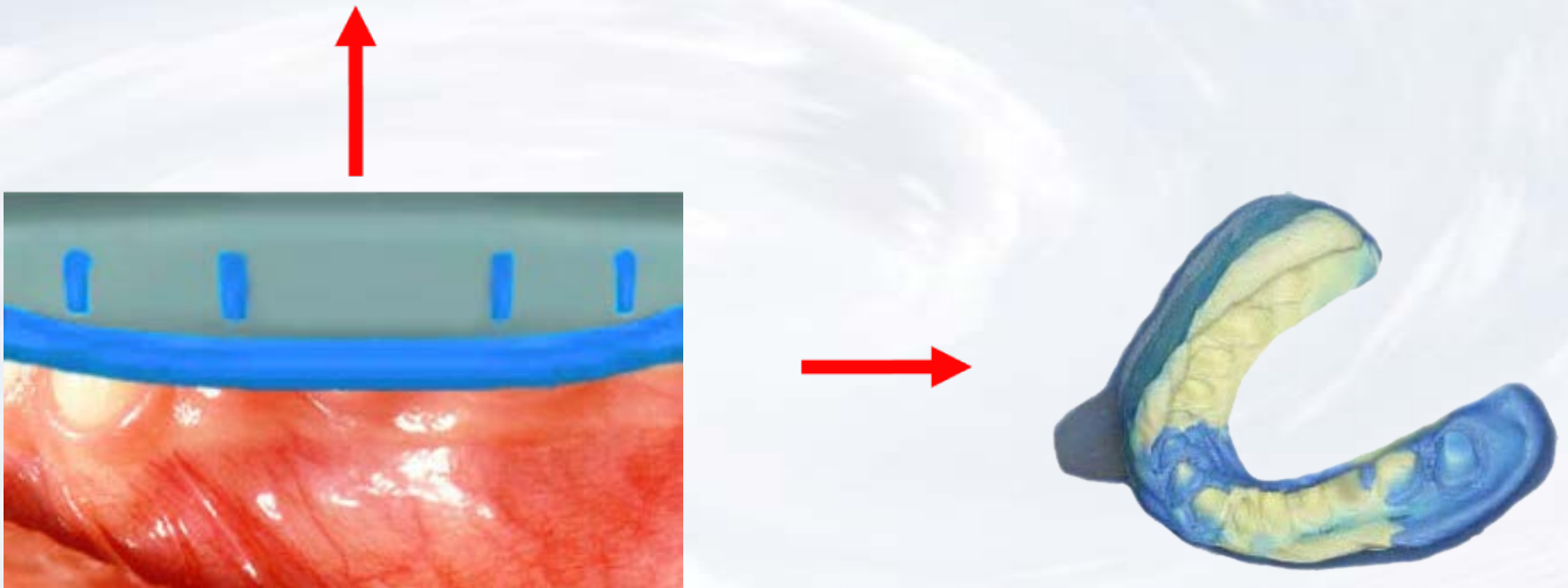


Seat impression to
capture dental arch



Blue Sky Bio

MPA Abutment for Conus Implant

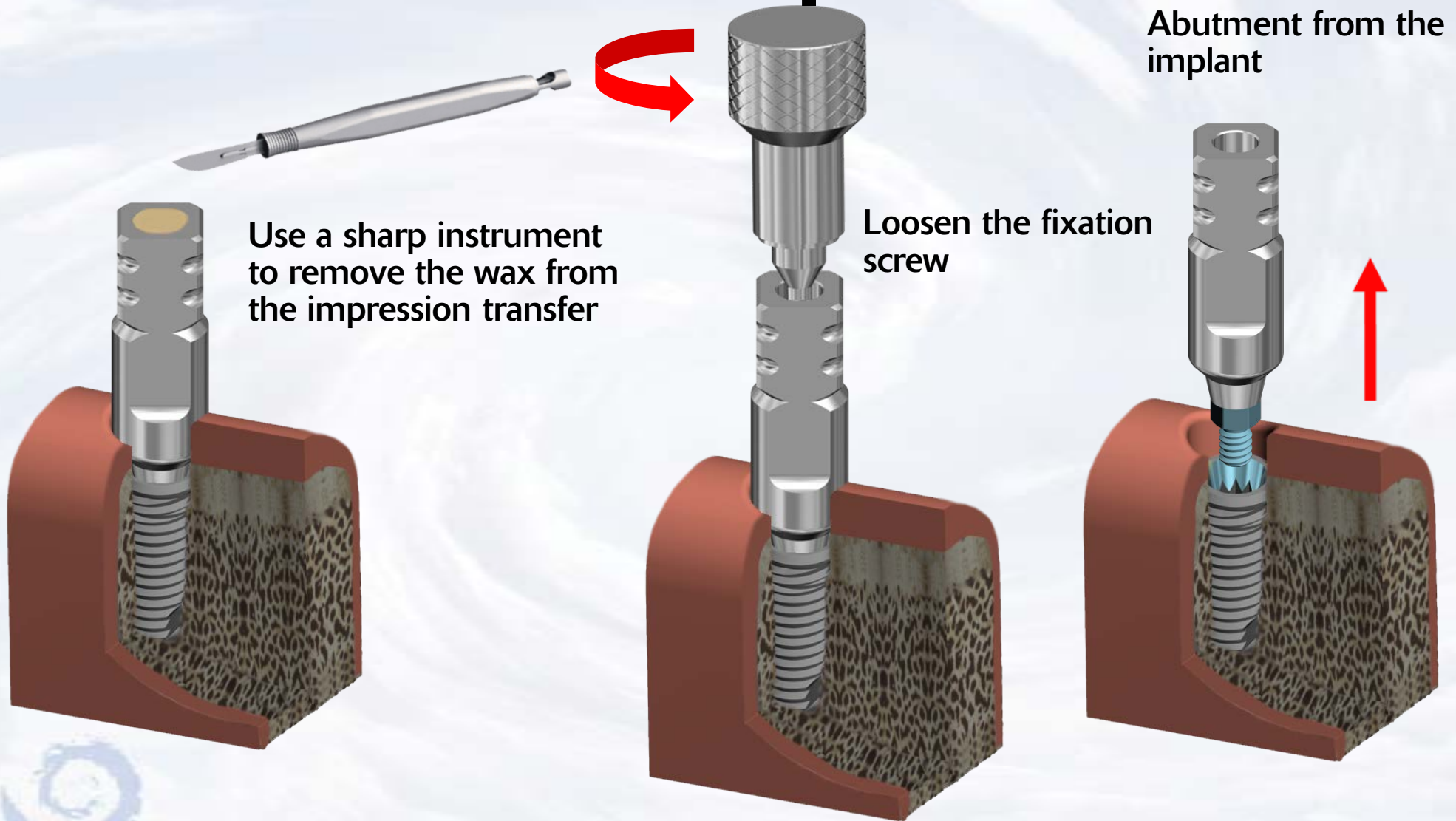


Remove the impression from the mouth when material has set

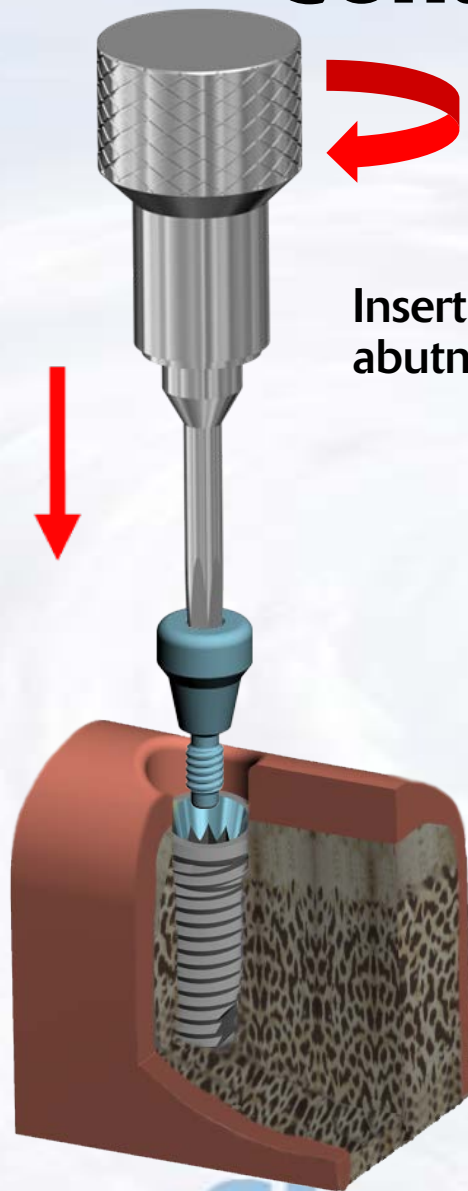


Blue Sky Bio

MPA Abutment for Conus Implant



MPA Abutment for Conus Implant



Insert healing
abutment into implant

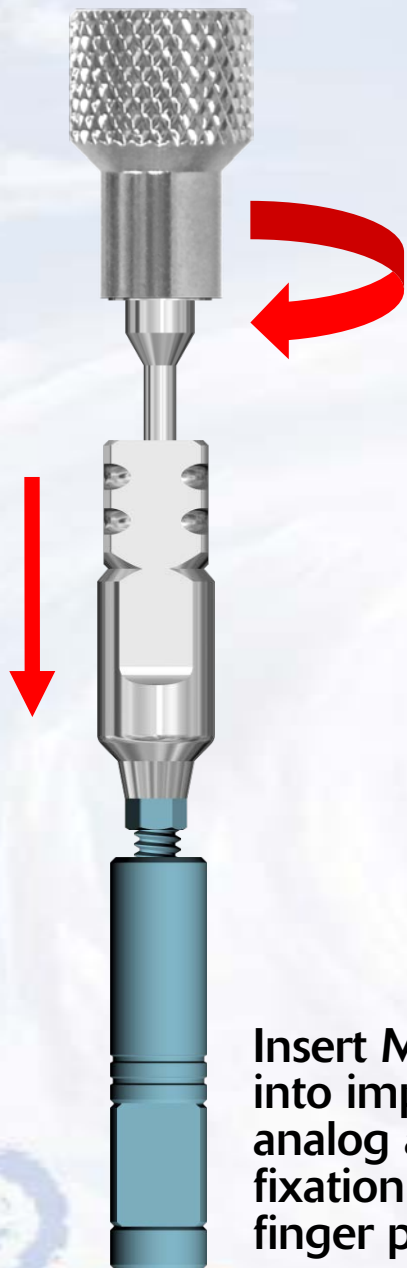


Healing abutment in place



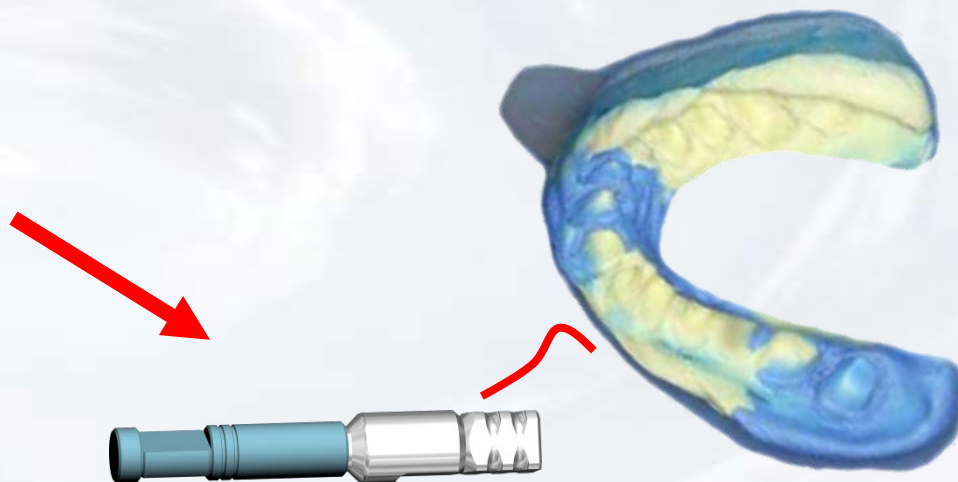
Blue Sky Bio

MPA Abutment for Conus Implant



Insert MPA Abutment into implant level analog and tighten fixation screw with finger pressure

Assembled MPA Abutment with implant level analog



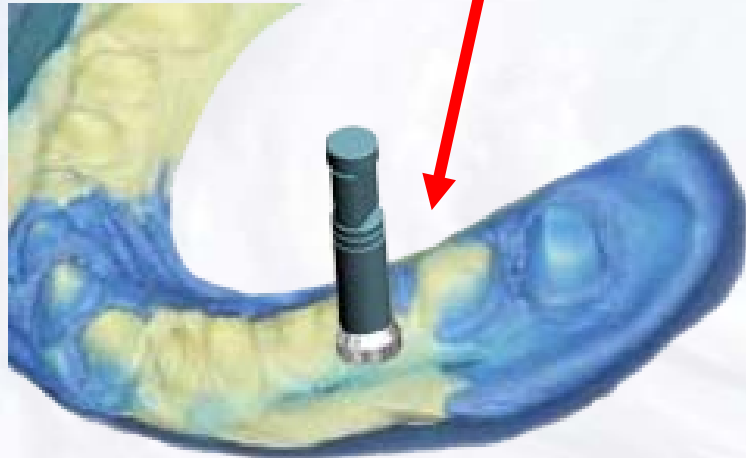
Insert MPA Abutment/analog assembly into impression.



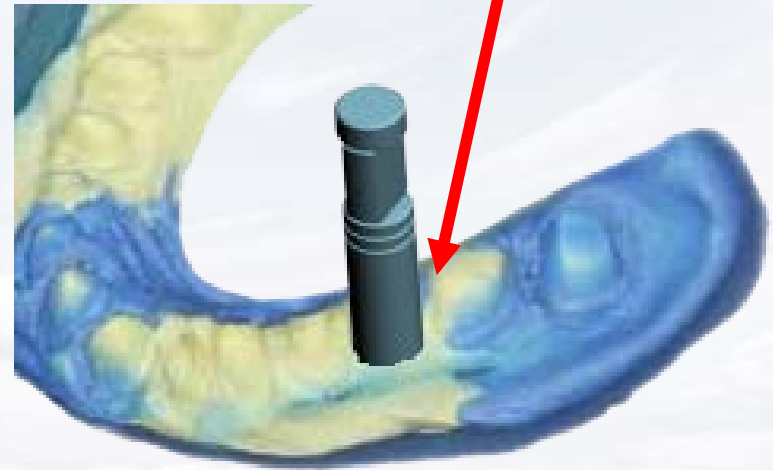
Blue Sky Bio

MPA Abutment for Conus Implant

Align the flats of MPA Abutment with the flats within the impression and insert the abutment/analog assembly into the impression



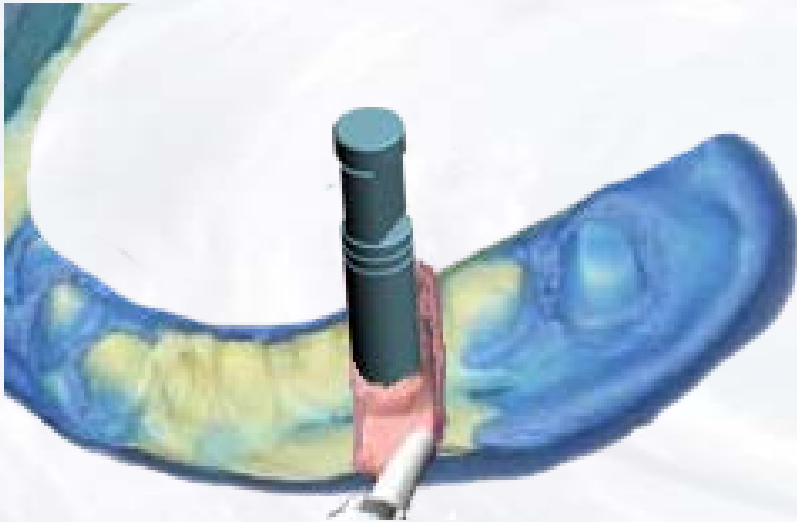
MPA Abutment/analog assembly completely seated inside impression



Blue Sky Bio

MPA Abutment for Conus Implant

Apply soft tissue replica material
around implant level analog



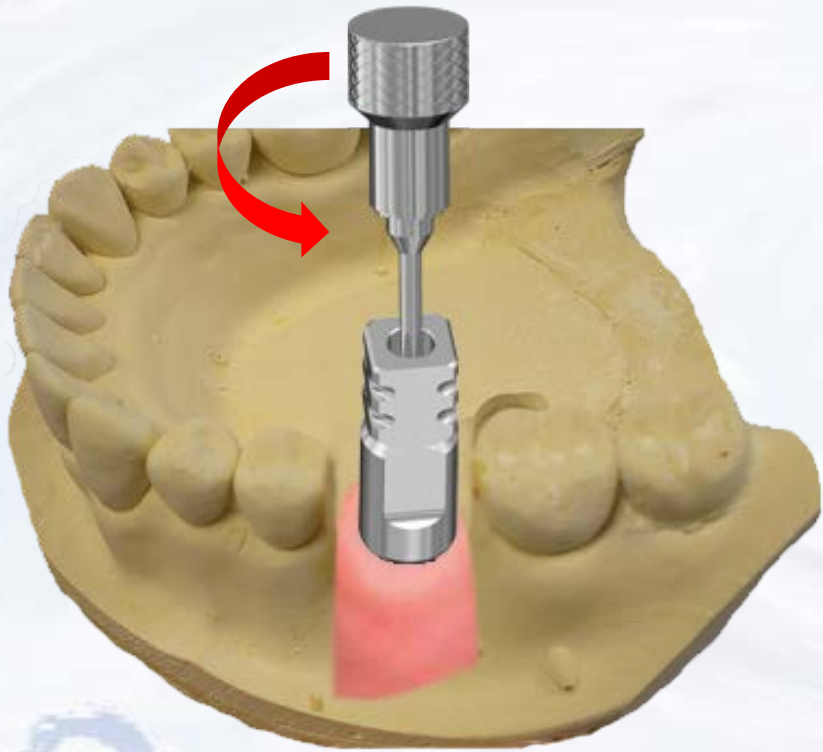
Pour dental stone into impression



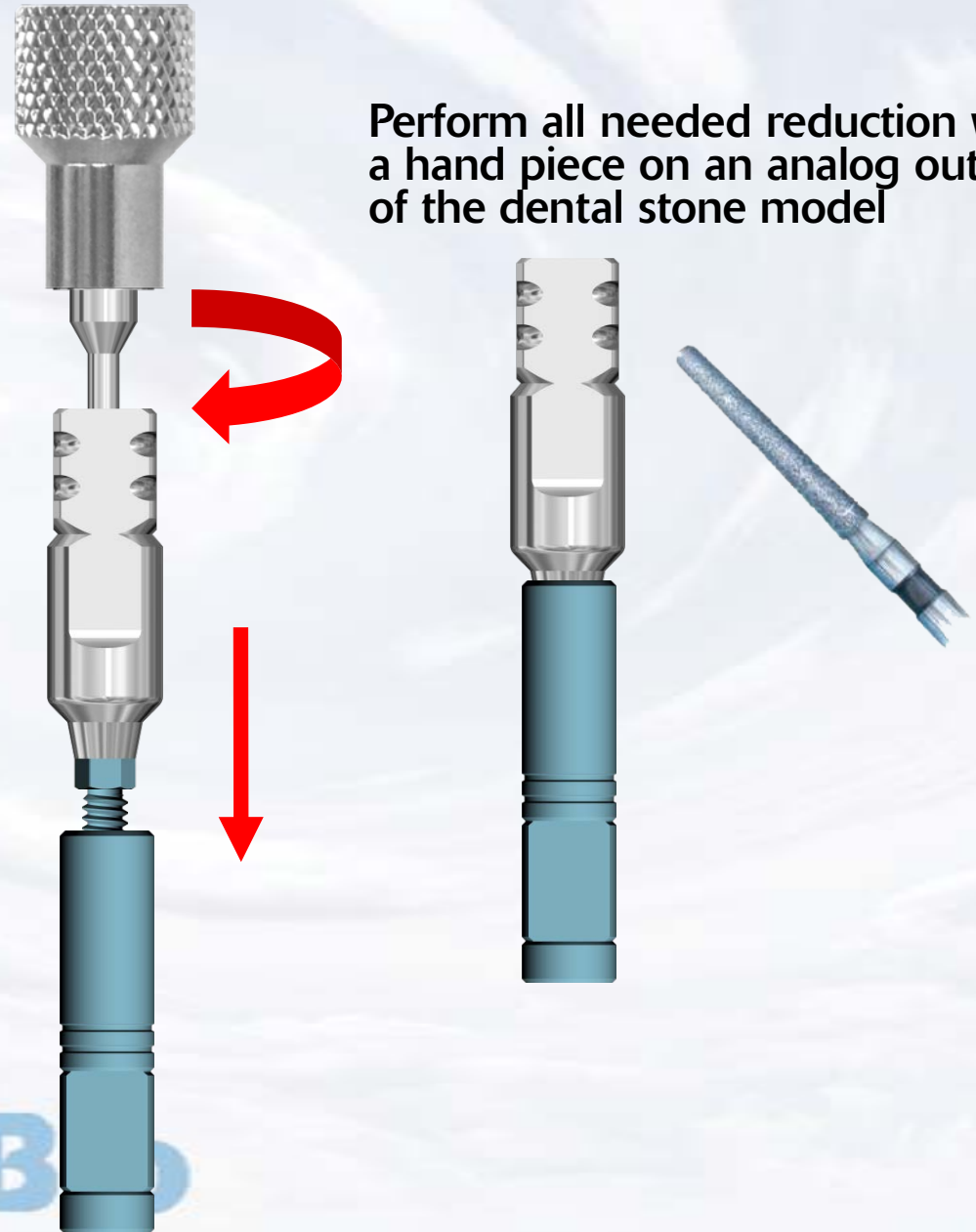
Blue Sky Bio

MPA Abutment for Conus Implant

Remove master cast from impression and after marking the areas for reduction on the abutment, remove it from the stone model



Perform all needed reduction with a hand piece on an analog outside of the dental stone model

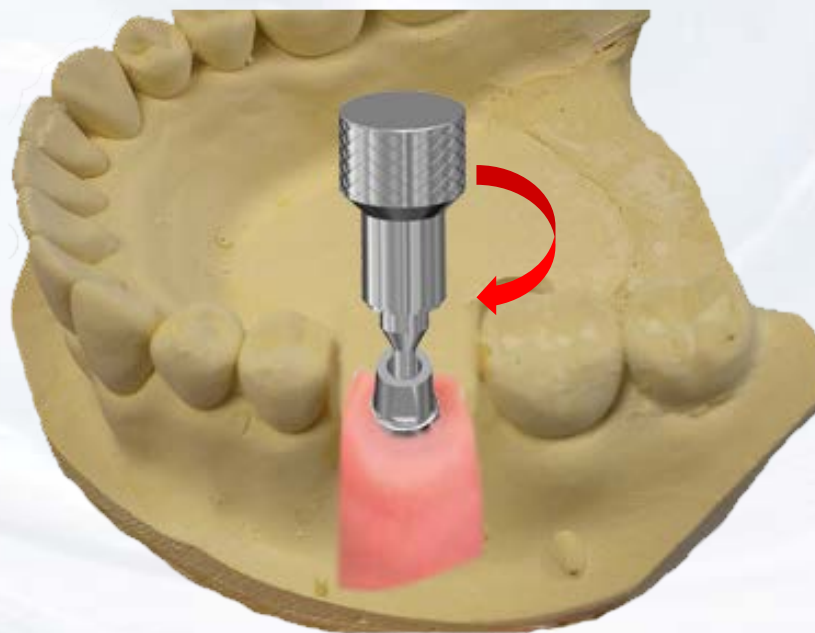


Blue Sky B

MPA Abutment for Conus Implant

Insert the customized abutment into
the model

Remove the adjusted
Abutment from the
analog



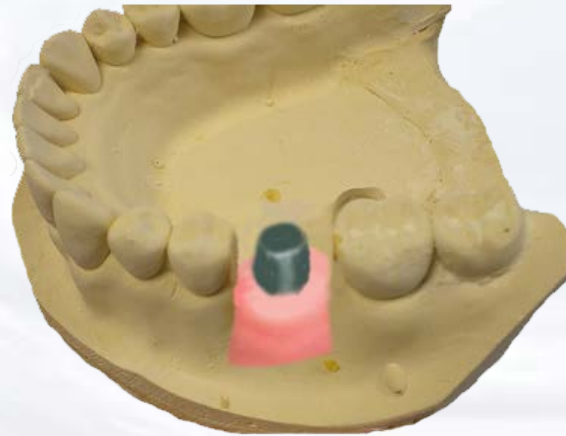
Blue Sky Bio

MPA Abutment for Conus Implant

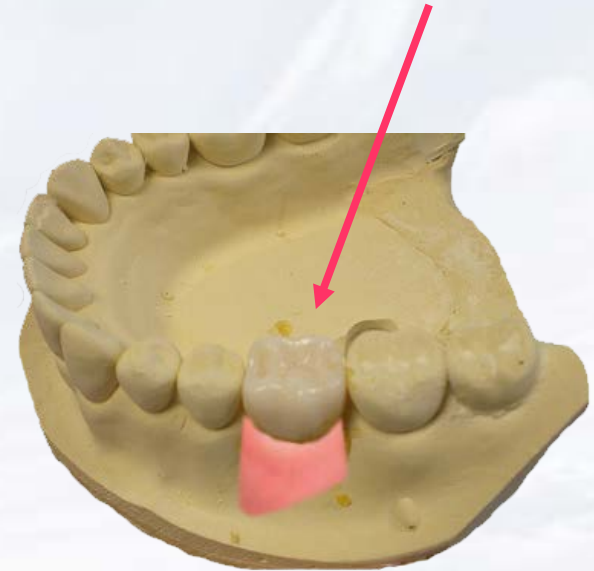
Add die spacer on the
abutment and wax up the
undercasting directly on the
abutment



Cast wax up in usual
manner and try in the
casting on the abutment



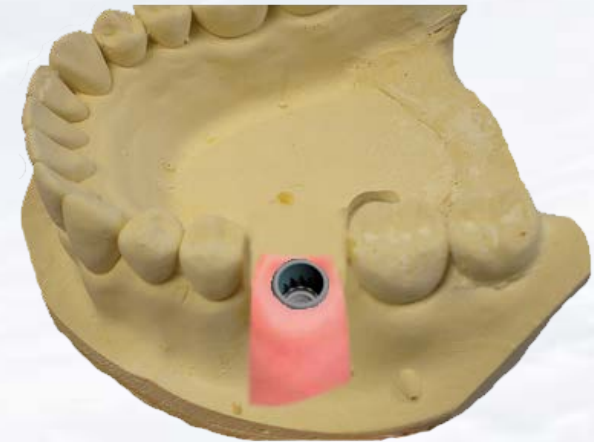
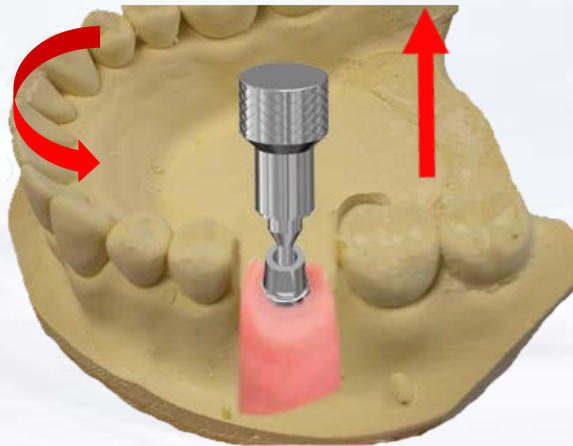
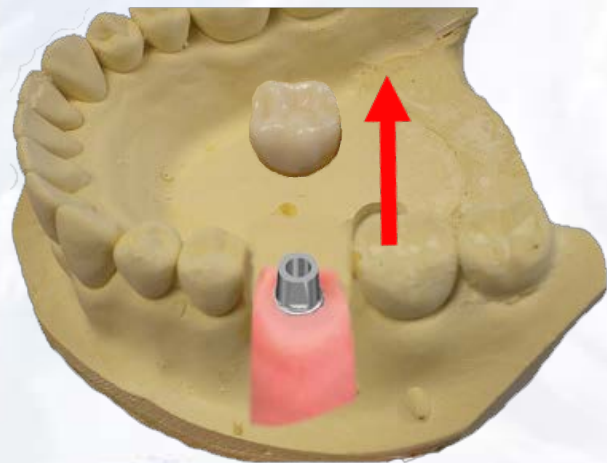
Stack and fire the ceramic
in the usual manner and
finish the restoration



Blue Sky Bio

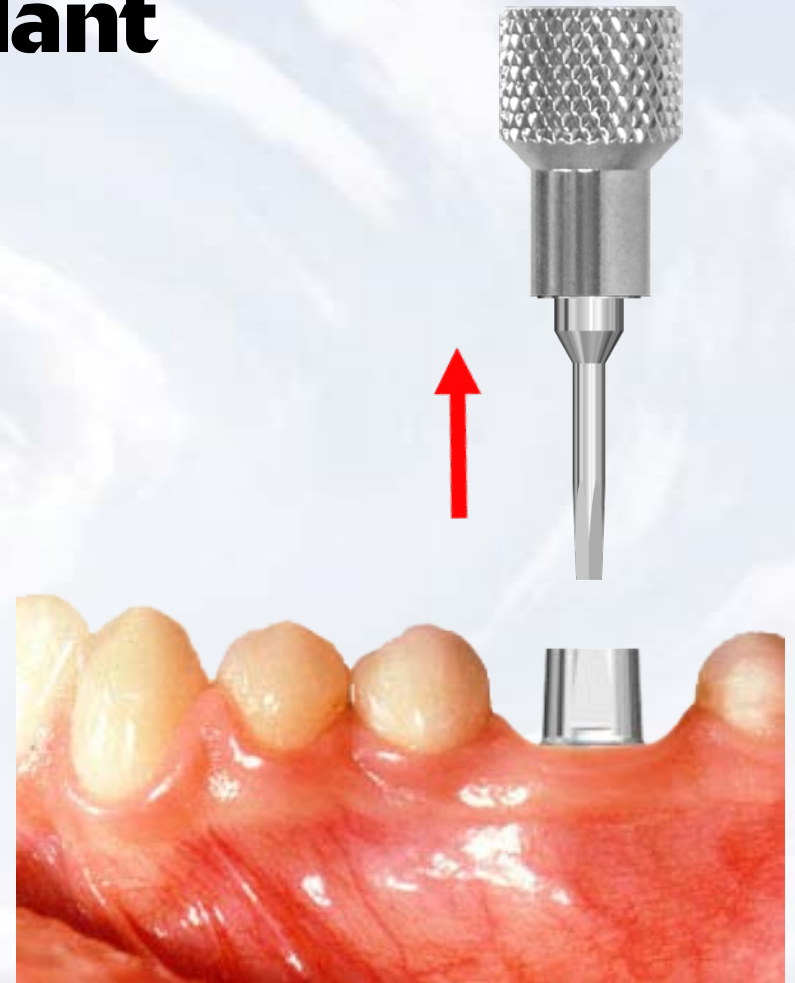
MPA Abutment for Conus Implant

Remove crown and abutment
from model



Blue Sky Bio

MPA Abutment for Conus Implant



Remove healing abutment and insert final abutment into implant orienting it according to the instructions from the laboratory



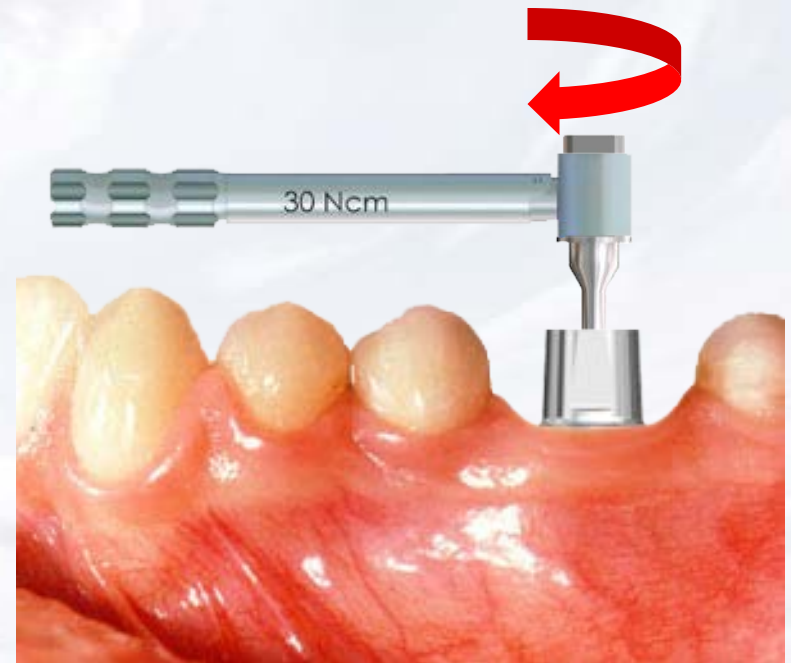
Blue Sky Bio

MPA Abutment for Conus Implant

Insert the hex driver within
the 30Ncm torque ratchet



Insert driver into the abutment screw
and turn torque ratchet clockwise until
torque of 30 Ncm is reached and the
head of the ratchet releases



Blue Sky Bio

MPA Abutment for Conus Implant



Cement restoration on abutment



Blue Sky Bio