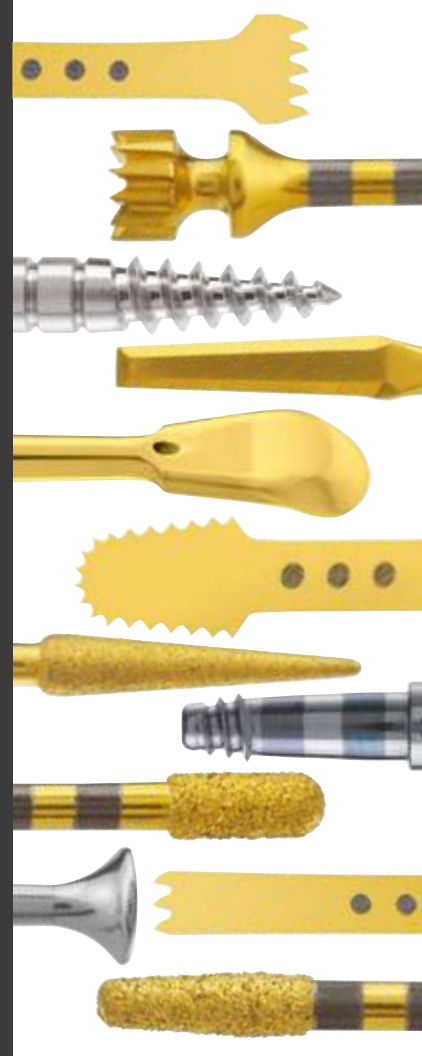


mectron

→ MECTRON
PIEZOSURGERY® INSERTS



→ THE ORIGINAL
PIEZOELECTRIC
BONE SURGERY –
EVIDENCE-BASED!



4	Insert quality	29	Insert P2-3 SP	52	Insert EL1 / Insert EL2
6	Indications	30	Insert MD1.9 / Insert MD1.2.2	53	Insert EL3 / Insert SLS
8	Basic Kit / Osteotomy Kit	31	Insert MD1.2.5	54	Insert SLE1 / Insert SLE2
9	Osteoplasty Kit / Retro Surgical Kit	32	Insert OT1 / Insert OT1A	55	Insert PR1 / Insert PR2
10	Sinus Lift Lateral Kit / Piezo Lift Kit	33	Insert OT2 / Insert OT3	56	Insert EN1 / Insert EN2
11	Piezo Lift Kit / Mini implant prep Kit	34	Insert OT4 / Insert OT5	57	Insert EN3 / Insert EN4
12	Implant Prep Kit Starter / Implant Prep Kit	35	Insert OT5A / OT5B	58	Insert EN5R / Insert EN5L
13	Implant Prep Kit Pro	36	Insert OT6 / Insert OT7	59	Insert EN6R / Insert EN6L
14	Extraction Kit / Explantation Kit	37	Insert OT7A / Insert OT7-20	60	Insert EX1 / Insert EX2
15	Periodontal Surgery Kit / Resective Perio Kit	38	Insert OT7S-4 / Insert OT7S-3 /	61	Insert EX3
16	Bone Expander Kits	39	Insert OT8R / Insert OT8L	62	Insert EXP3-R / Insert EXP3-L
17	Sinus Physiolift® II Kits	40	Insert OT9 / Insert OT11	63	Insert EXP4-R / Insert EXP4-L
18	Insert IM1S / PINS IM1, IM1S, 2-2.4, 2-3	41	Insert OT12 / Insert OT12S	64	Insert PS1 / Insert PP1
19	Insert IM1 AL / PINS IM1 AL, 2-2.4 AL, 2-3 AL	42	Insert OT13 / Insert OT14	65	Insert PS2 / Insert PS6
20	Insert IM2A / Insert IM2P	43	Insert SLO-H	66	Insert PP10 / Insert PP11
21	Insert IM2A-15 / Insert IM2P-15	44	Insert PL1 / Insert PL2	67	Insert PP12
22	Insert IM2.8A / Insert IM2.8P	45	Insert PL3 / Insert OP1	68	Tipholder ICP, tip IC1
23	Insert IM3A / Insert IM3P	46	Insert OP2 / Insert OP3	69	Crown prep tips
24	Insert IM3A-15 / Insert IM3P-15	47	Insert OP3A / Insert OP4	70	Bone Expanders
25	Insert IM3.4A / Insert IM3.4P	48	Insert OP5 / Insert OP5A	72	Sinus Physiolift® II
26	Insert IM4A / Insert IM4P	49	Insert OP6 / Insert OP6A	74	Enzymec
27	Insert P2-3 / Insert P3-4	50	Insert OP7 / Insert OP8	75	PIEZOSURGERY® insert box / Insert Tray
28	Insert IM1 SP / Insert IM2 SP	51	Insert OP9 / Insert SLC	76	Reference Numbers

→ INSERT QUALITY



→ PRECISION

A CNC controlled 5-dimensional sharpening machine cuts with an accuracy of up to 0.1 μm . The whole cutting process for a single insert lasts up to 12 min.



→ MATERIAL

mectron surgical inserts are built with medical grade, high quality, stainless steel.

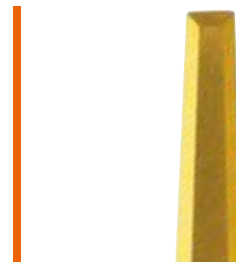
→ HIGH END INSERTS FOR PROFESSIONALS

Each mectron surgical insert will pass through 12 working steps.



→ DIAMOND COATING

Depending on the indication, the inserts are coated with specially selected diamonds. The granulometry of the diamond coating is adapted to the respective treatment.



→ TITANIUM NITRIDE COATING

A coating of titanium nitride, applied to inserts which treat bone, increases the hardness of the surface, avoids corrosion and therefore increases working life.



→ LABELING

Each insert is gently labeled by a laser.

→ QUALITY CHECK

Each insert is visually inspected by Quality Control to guarantee optimal performance.

INDICATIONS

→ SINUS LIFT TECHNIQUE CRESTAL APPROACH		→ SINUS LIFT TECHNIQUE LATERAL APPROACH		→ IMPLANT SITE PREPARATION		→ MINI DENTAL IMPLANT SITE PREPARATION		→ RIDGE EXPANSION		→ PERIOSTEUM PREPARATION		→ EXTRACTIONS	
→ PIEZO-LIFT		→ SINUS PHYSIOLIFT		→ STANDARD		→ STANDARD		→ STANDARD		→ STANDARD		→ STANDARD	
PL1	IM1 SP	SLC	IM1S	IM1 AL	IM1S	OT7	PR1	EX1					
PL2	IM2 SP	SLO-H	IM2A	IM2A-15	MDI 1.9	OT4	PR2	EX2					
PL3	P2-3 SP	SLS	IM3A	IM2.8A	MDI 2.2	OP5		EX3					
	OT9	SLE1	IM4A	IM3A-15	MDI 2.5	→ OPTIONAL		PS2					
	CS1	SLE2	IM2P	IM3.4A		OT2							
	CS2	OP3	IM3P	IM2P-15		OT7A							
	PIN IM1	OT1	IM4P	IM2.8P		OT7S-4							
	PIN 2-2.4	EL1	OT4	IM3P-15		OT7S-3							
	PROBE SP	→ OPTIONAL	P2-3	IM3.4P		OT7-20							
		OT1A	P3-4			OT12							
		OT5				OT12S							
		OT5A				BONE EXPANDERS							
		OT5B											
		EL2											
		EL3											

→ EXPLANTATION		→ BONE BLOCK GRAFTING		→ BONE CHIP GRAFTING/BONE MODELING		→ ENDODONTICS		→ OSTEOTOMY CLOSE TO NERVES		→ CORTICOTOMY TECHNIQUE		→ PERIODONTAL SURGERY		→ CROWN PREPARATION	
→ STANDARD		→ STANDARD		→ STANDARD		→ STANDARD		→ STANDARD		→ STANDARD		→ STANDARD		→ STANDARD	
EXP3-R	OT7	OT7	OP3	OP3	OP7	OT1	OT7S-4	OP5A	PS1	DB2					
EXP3-L	OP5	OP5	OP1	OP1	PS2	OT5	OT7S-3	OP8	PS6	CROWN PREP TIPS					
EXP4-R	OT8L	→ OPTIONAL	EN1	EN1	EN1		→ OPTIONAL	OP9	PP10	TA12D90* Ø 1.2 mm					
EXP4-L	OT8R	OP2	EN2	EN2	EN2		OT7	OT13	PP11	TA12D60*					
	→ OPTIONAL	OP3A	EN3	EN3	EN3		OT7A	OT14	PP12	TA14D120* Ø 1.4 mm					
	OT6		EN4	EN4	EN4			OP5	OP2	TA14D90*					
	OT7A		→ OPTIONAL	→ OPTIONAL	→ OPTIONAL			OP3	OP3A	TA14D60*					
	OT7S-4		EN5R	EN5R	EN5R			PS2	OP4	TA16D120* Ø 1.6 mm					
	OT7S-3		EN5L	EN5L	EN5L			PP1	OP6	TA16D90*					
	OT7-20		EN6R	EN6R	EN6R			ICP + IC1	OP6A	TA16D60*					
	OT12		EN6L	EN6L	EN6L										
	OT12S		OP3	OP3	OP3										



→ BASIC KIT



→ EQUIPPED WITH:
OP1, OP3, OT1, OT4, OT7, insert tray

→ OSTEOTOMY KIT



→ EQUIPPED WITH:
OT7, OT7S-4, OT7S-3, OT8R, OT8L, insert tray

→ OSTEOPLASTY KIT



→ EQUIPPED WITH:
OP1, OP3, OP3A, OT4, OP5, insert tray

→ RETRO SURGICAL KIT



→ EQUIPPED WITH:
OP7, EN1, EN3, EN5R, EN5L, insert tray

→ SINUS LIFT LATERAL KIT* → PIEZO LIFT KIT



→ EQUIPPED WITH:
SLC, SLO-H, SLS, SLE1, SLE2, insert tray



→ EQUIPPED WITH:
PL1, PL2, PL3, insert tray

→ SINUS LIFT KIT



→ EQUIPPED WITH:
OT1, OT5, EL1, EL2, EL3, insert tray

→ MINI IMPLANT PREP KIT



→ EQUIPPED WITH:
IM1S, MDI 1.9, MDI 2.2, MDI 2.5, insert tray

→ IMPLANT PREP KIT STARTER → IMPLANT PREP KIT

→ IMPLANT PREP KIT PRO



→ EQUIPPED WITH:
IM1S, IM2P, IM3P, OT4, P2-3, insert tray

→ EQUIPPED WITH:
IM1S, IM2A, IM2P, IM3A, IM3P, OT4, insert tray

→ EQUIPPED WITH:
IM1S, IM2A, IM2P, IM3A, IM3P, OT4, IM4A, IM4P,
P2-3, P3-4, 3 pins IM1S, 3 pins 2-2.4, insert tray

→ EXTRACTION KIT



→ EQUIPPED WITH:
EX1, EX2, EX3, PS2, PS6, insert tray

→ EXPLANTATION KIT



→ EQUIPPED WITH:
EXP3-R, EXP3-L, EXP4-L, EXP4-R, insert tray

→ PERIODONTAL SURGERY KIT → RESECTIVE PERIO KIT*



→ EQUIPPED WITH:
PP1, PS2, PP10, PP11, PP12, insert tray



→ EQUIPPED WITH:
OT13, OT14, OP5A, OP8, OP9, insert tray

→ BONE EXPANDER KITS

BONE EXPANDER KIT BASIC

→ EQUIPPED WITH:

- 1 expander of each type
- 1 ADM8
- 1 bone expander tray



BONE EXPANDER KIT PRO

→ EQUIPPED WITH:

- 1 expander of each type
- 1 ADM8, 1 ADR16, 1 ADR7
- 1 ratchet
- 1 bone expander tray



→ 2.5x11.5 → 3.5x11.5 → 4.5x11.5 → 2.5x15 → 3.5x15 → 4.5x15 → ADM8 → ADR16 → ADR7 → RATCHET



→ SINUS PHYSIOLIFT® II KITS

SINUS PHYSIOLIFT® II KIT BASIC

→ EQUIPPED WITH:

- Crestal sinus elevators 2 x CS1 and 2 x CS2
- Pressure control system: Physiolifter
- Ball shaped probe PROBE SP
- Micromotor and ratchet adapters: ADM10, ADR10
- Ratchet
- 3 silicone tubes with tube-tube connector
- 2 complete sealed tubes
- 3 sterile disposable syringes
- 2 insert trays
- Clinical Protocol and DVD

SINUS PHYSIOLIFT® II KIT PRO

→ EQUIPPED WITH:

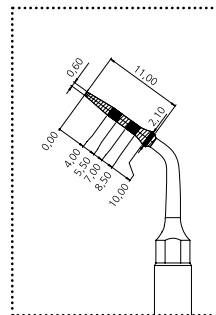
- PIEZOSURGERY® inserts: IM1 SP, IM2 SP, P2-3 SP, OT9
- Alignment pins: PIN IM1, PIN 2-2.4
- Crestal sinus elevators 2 x CS1 and 2 x CS2
- Pressure control system: Physiolifter
- Ball shaped probe PROBE SP
- Micromotor and ratchet adapters: ADM10, ADR10
- Ratchet
- 3 silicone tubes with tube-tube connector
- 2 complete sealed tubes
- 3 sterile disposable syringes
- 3 insert trays
- Clinical Protocol and DVD

→ CS1 → CS2 → PHYSIOLIFTER → ADR10 → ADM10 → RATCHET → PLUG → PROBE SP → IM1 SP → IM2 SP → P2-3 SP → OT9



→ IMS1

initial implant site preparation insert



diamond grain size 30 µm



→ CUTTING ACTION

bone perforation

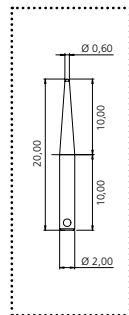
→ CLINICAL APPLICATION

initial pilot osteotomy

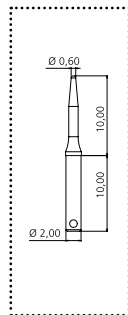
18

→ PINS

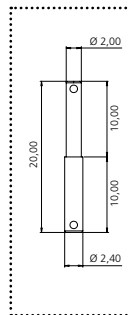
alignment pins



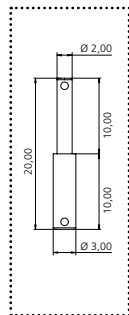
→ PIN IM1



→ PIN IM1S



→ PIN 2-2.4



→ PIN 2-3



→ CUTTING ACTION

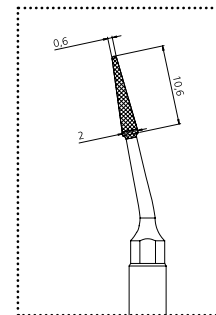
alignment pins, dedicated to
IM1S, IM2 (Ø 2), IM3 (Ø 3), OT4 (Ø 2.4), IM1 SP

→ CLINICAL APPLICATION

to check preparation axis alignment

→ IM1 AL

insert for initial osteotomy in extraction sites



diamond grain size 30 µm



→ CUTTING ACTION

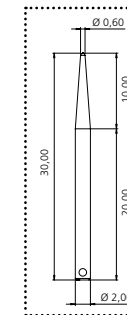
bone perforation

→ CLINICAL APPLICATION

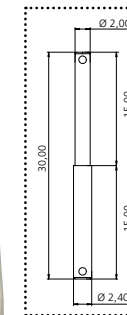
initial pilot osteotomy in extraction sites

→ ALVEOLAR PINS

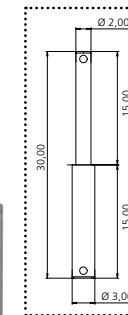
alignment pins



→ PIN IM1 AL



→ PIN 2-2.4 AL



→ PIN 2-3 AL



→ CUTTING ACTION

30 mm alignment pins, for extraction sites dedicated to
IM1 AL, IM2A (Ø 2), OT4 (Ø 2.4), IM3A (Ø 3)

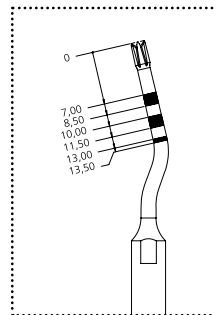
→ CLINICAL APPLICATION

to check preparation axis alignment

19

→ IM2A

2 mm Ø implant site preparation insert



→ CUTTING ACTION

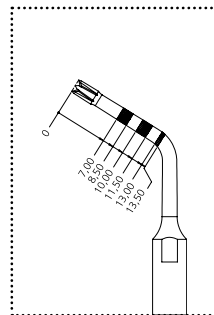
bone perforation

→ CLINICAL APPLICATION

pilot osteotomy in anterior region

→ IM2P

2 mm Ø implant site preparation insert



→ CUTTING ACTION

bone perforation

→ CLINICAL APPLICATION

pilot osteotomy in posterior region

→ IM2A-15

2 mm Ø implant site preparation insert

length: 15 mm



→ CUTTING ACTION

bone perforation

→ CLINICAL APPLICATION

pilot osteotomy in anterior region

→ IM2P-15

2 mm Ø implant site preparation insert

length: 15 mm



→ CUTTING ACTION

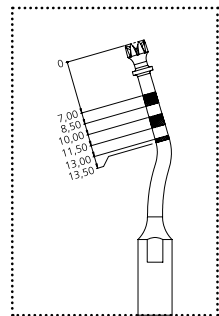
bone perforation

→ CLINICAL APPLICATION

pilot osteotomy in posterior region

→ IM2.8A

2.8 mm Ø implant site preparation insert



→ CUTTING ACTION

bone perforation

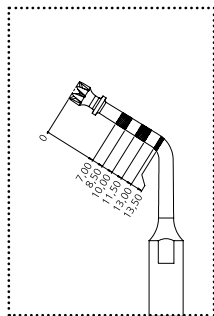
→ CLINICAL APPLICATION

to enlarge or to finalize the implant site preparation;
insert with double irrigation to avoid overheating

22

→ IM2.8P

2.8 mm Ø implant site preparation insert



→ CUTTING ACTION

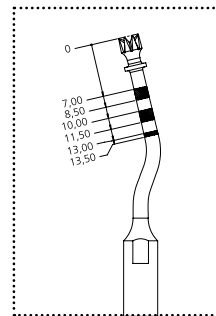
bone perforation

→ CLINICAL APPLICATION

to enlarge or to finalize the implant site preparation;
insert with double irrigation to avoid overheating

→ IM3A

3 mm Ø implant site preparation insert



→ CUTTING ACTION

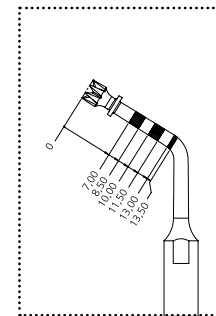
bone perforation

→ CLINICAL APPLICATION

to enlarge or to finalize the implant site preparation;
insert with double irrigation to avoid overheating

→ IM3P

3 mm Ø implant site preparation insert



→ CUTTING ACTION

bone perforation

→ CLINICAL APPLICATION

to enlarge or to finalize the implant site preparation;
insert with double irrigation to avoid overheating

23

→ IM3A-15

3 mm Ø implant site preparation insert



→ CUTTING ACTION

bone perforation

→ CLINICAL APPLICATION

to enlarge or to finalize the implant site preparation;
insert with double irrigation to avoid overheating

→ IM3P-15

3 mm Ø implant site preparation insert



→ CUTTING ACTION

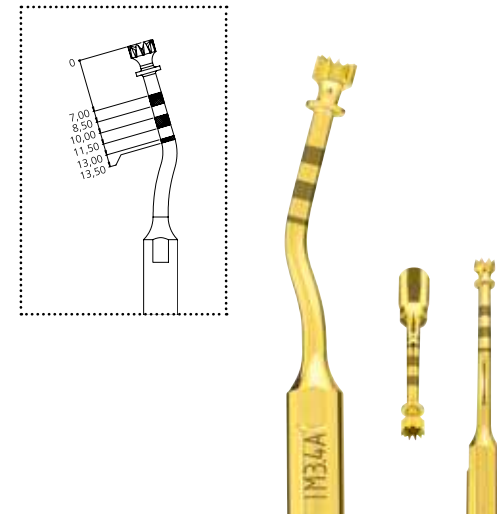
bone perforation

→ CLINICAL APPLICATION

to enlarge or to finalize the implant site preparation;
insert with double irrigation to avoid overheating

→ IM3.4A

3.4 mm Ø implant site preparation insert



→ CUTTING ACTION

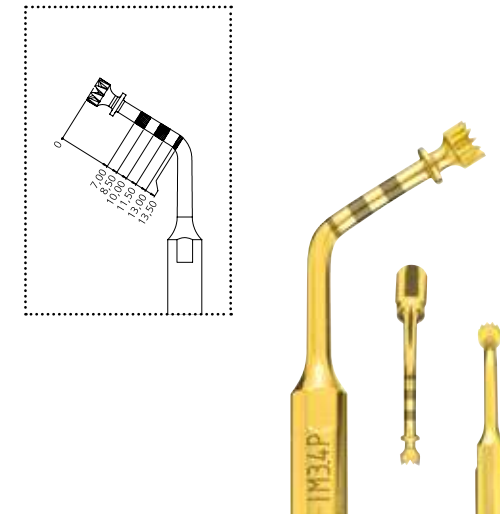
bone perforation

→ CLINICAL APPLICATION

to enlarge or to finalize the implant site preparation;
insert with double irrigation to avoid overheating

→ IM3.4P

3.4 mm Ø implant site preparation insert



→ CUTTING ACTION

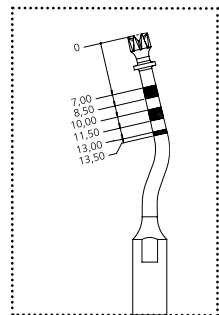
bone perforation

→ CLINICAL APPLICATION

to enlarge or to finalize the implant site preparation;
insert with double irrigation to avoid overheating

→ IM4A

4 mm Ø implant site preparation insert



→ CUTTING ACTION

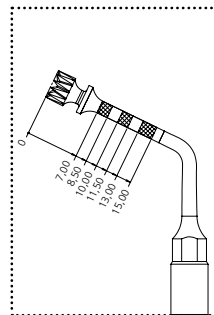
bone perforation

→ CLINICAL APPLICATION

to finalize the implant site preparation; insert with double irrigation to avoid overheating

→ IM4P

4 mm Ø implant site preparation insert



→ CUTTING ACTION

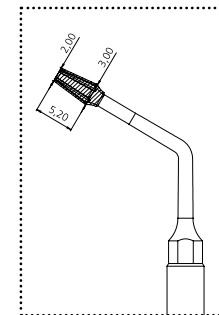
bone perforation

→ CLINICAL APPLICATION

to finalize the implant site preparation; insert with double irrigation to avoid overheating

→ P2-3

pilot implant site preparation insert



diamond grain size 150 µm



→ CUTTING ACTION

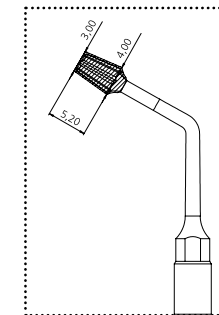
micrometric osteotomy

→ CLINICAL APPLICATION

to optimize concentricity of implant site preparation between Ø 2 and Ø 3 mm

→ P3-4

pilot implant site preparation insert



diamond grain size 150 µm



→ CUTTING ACTION

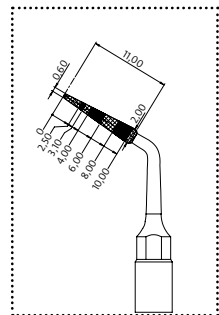
micrometric osteotomy

→ CLINICAL APPLICATION

to optimize concentricity of implant site preparation between Ø 3 and Ø 4 mm

→ IM1 SP

initial implant site preparation insert



→ CUTTING ACTION

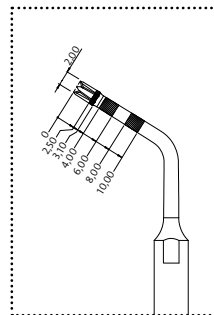
bone perforation

→ CLINICAL APPLICATION

initial osteotomy in Sinus Physiolift® technique

→ IM2 SP

implant site preparation insert



→ CUTTING ACTION

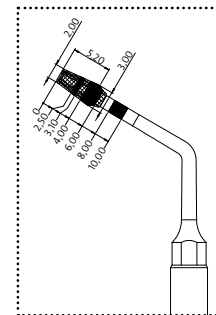
bone perforation

→ CLINICAL APPLICATION

osteotomy in Sinus Physiolift® technique

→ P2-3 SP

implant site preparation insert



→ CUTTING ACTION

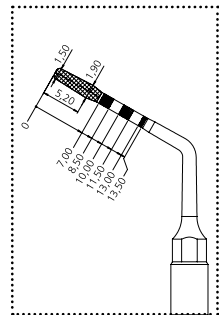
bone perforation

→ CLINICAL APPLICATION

removal of sinus basal cortex in Sinus Physiolift® procedure

→ MDI 1.9

mini dental implant insert



→ CUTTING ACTION

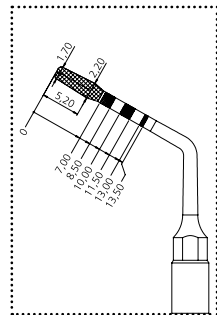
bone perforation

→ CLINICAL APPLICATION

osteotomy technique for mini implants site preparation

→ MDI 2.2

mini dental implant insert



→ CUTTING ACTION

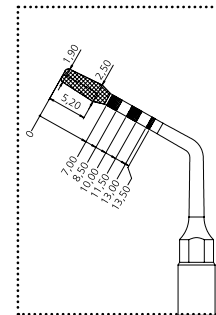
bone perforation

→ CLINICAL APPLICATION

osteotomy technique for mini implants site preparation

→ MDI 2.5

mini dental implant insert



→ CUTTING ACTION

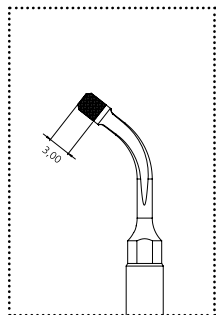
bone perforation

→ CLINICAL APPLICATION

osteotomy technique for mini implants site preparation

→ OT1

sinus bony window osteotomy insert



diamond grain size 91 μm



→ CUTTING ACTION

micrometric osteotomy (about 1 mm)

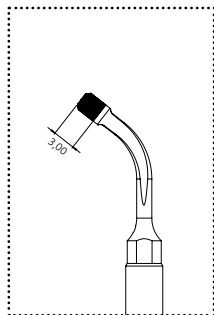
→ CLINICAL APPLICATION

to finalize the osteotomy in proximity of soft tissue
(for example: sinus membrane, vessel, alveolar nerve)

32

→ OT1A

sinus bony window osteotomy insert



diamond grain size 126 μm



→ CUTTING ACTION

micrometric osteotomy (about 1 mm)

→ CLINICAL APPLICATION

to finalize the osteotomy in proximity of soft tissue
(for example: sinus membrane, vessel, alveolar nerve)

→ OT2

basic scalpel



→ CUTTING ACTION

osteotomy

→ CLINICAL APPLICATION

osteotome of great precision in anatomically thin structures (for example,
ridge expansion, interdental corticotomies, non traumatic nasal spina)

→ OT3

swallow-tailed osteotome



→ CUTTING ACTION

osteotomy

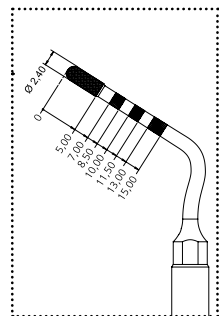
→ CLINICAL APPLICATION

mandibular corticotomy, block harvesting, fragmenta osteotomy

33

→ OT4

differential implant site preparation insert



diamond grain size 151 µm



→ CUTTING ACTION

micrometric osteotomy (about 1 mm)

→ CLINICAL APPLICATION

to correct pilot osteotomy axis, to finalize the implant site preparation close to the alveolar nerve; sinus crestal approach technique

34

→ OT5

osteoplasty and osteotomy insert

Ø 1.7 – diamond grain size 91 µm



→ CUTTING ACTION

micrometric osteotomy or osteoplasty

→ CLINICAL APPLICATION

non-traumatic, to finalize the osteotomy or osteoplasty on thin bone and/or near delicate anatomic structures

→ OT5A

osteoplasty and osteotomy insert

Ø 1.9 – diamond grain size 91 µm



→ CUTTING ACTION

micrometric osteotomy or osteoplasty

→ CLINICAL APPLICATION

non-traumatic, to finalize the osteotomy or osteoplasty on thin bone and/or near delicate anatomic structures

→ OT5B

osteoplasty and osteotomy insert

Ø 1.7 – diamond grain size 126 µm



→ CUTTING ACTION

micrometric osteotomy or osteoplasty

→ CLINICAL APPLICATION

non-traumatic, to finalize the osteotomy or osteoplasty on thin bone and/or near delicate anatomic structures

35

→ OT6

bony saw 0.75 mm



→ CUTTING ACTION

high effectiveness osteotomy

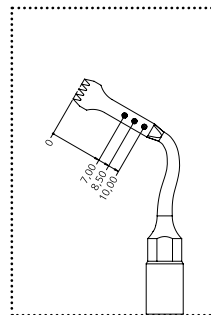
→ CLINICAL APPLICATION

osteotomy of large bone sections during maxillofacial surgery

36

→ OT7

principal micro-saw 0.55 mm



thickness 0.55 mm



→ CUTTING ACTION

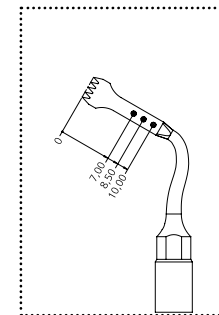
high effectiveness osteotomy

→ CLINICAL APPLICATION

the osteotomy technique in maxilla and mandible:
ridge expansion, corticotomy technique, bone block grafting

→ OT7A

principal micro-saw 0.55 mm



thickness 0.75 mm



→ CUTTING ACTION

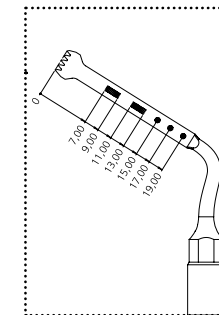
high effectiveness osteotomy

→ CLINICAL APPLICATION

the osteotomy technique in maxilla and mandible:
ridge expansion, corticotomy technique, bone block grafting

→ OT7-20

micro-saw, length 20 mm



thickness 0.6 mm



torque wrench
K8 required

→ CUTTING ACTION

micrometric osteotomy or osteoplasty

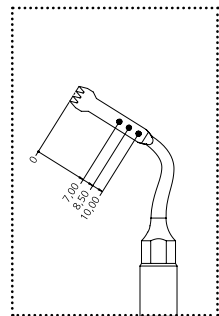
→ CLINICAL APPLICATION

ridge expansion technique, bone block grafting (from chin/mandible ramus),
Le Fort I osteotomy, bilateral sagittal split osteotomy

37

→ OT7S-4

special micro-saw 0.35 mm (4 teeth)



→ CUTTING ACTION

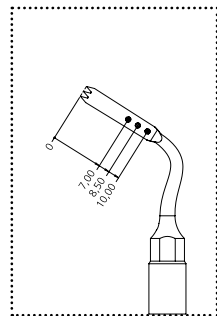
high effectiveness and precision osteotomy

→ CLINICAL APPLICATION

very thin osteotomy, corticotomy for orthodontic microsurgery technique, root separation in dental extraction technique and periodontal surgery

→ OT7S-3

special micro-saw 0.35 mm (3 teeth)



→ CUTTING ACTION

high precision osteotomy

→ CLINICAL APPLICATION

very thin and small osteotomy and corticotomy technique for orthodontic microsurgery, root fraction technique for dental extraction maneuver

→ OT8R

angled micro-saw 0.6 mm



→ CUTTING ACTION

horizontal osteotomy

→ CLINICAL APPLICATION

all the osteotomy technique in maxilla and mandible bone block grafting

→ OT8L

angled micro-saw 0.6 mm



→ CUTTING ACTION

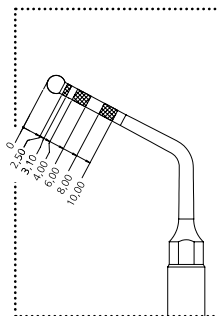
horizontal osteotomy

→ CLINICAL APPLICATION

all the osteotomy technique in maxilla and mandible bone block grafting

→ OT9

osteoplasty and osteotomy insert

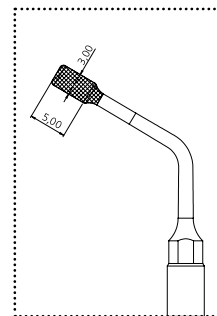


Ø 2.4 – diamond grain size 151 µm



→ OT11

osteoplasty and osteotomy insert

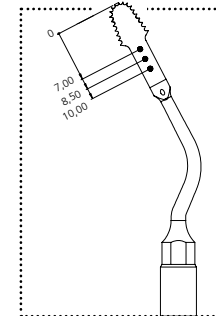


Ø 3.0 – diamond grain size 151 µm



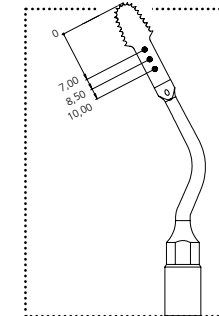
→ OT12

circular micro-saw 0.35 mm



→ OT12S

circular micro-saw 0.25 mm



→ CUTTING ACTION

micrometric osteotomy or osteoplasty

→ CLINICAL APPLICATION

to finalize the osteotomy or osteoplasty near delicate anatomic structures; removal of the sinus basal cortex in Sinus Physiolift® procedure; insert with double irrigation to avoid overheating

→ CUTTING ACTION

micrometric osteotomy or osteoplasty

→ CLINICAL APPLICATION

removal of the sinus basal cortex and elevation of the sinus membrane

→ CUTTING ACTION

high effectiveness and precision osteotomy

→ CLINICAL APPLICATION

dedicated to the osteotomy techniques where the standard piezoelectric bone saws may have a difficult surgical approach

→ CUTTING ACTION

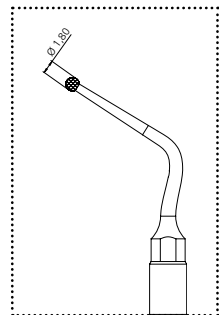
high effectiveness and precision osteotomy

→ CLINICAL APPLICATION

dedicated to the osteotomy techniques where the standard piezoelectric bone saws may have a difficult surgical approach

→ OT13

osteoplasty and osteotomy insert



Ø 1.8 – diamond grain size 150 µm



→ CUTTING ACTION

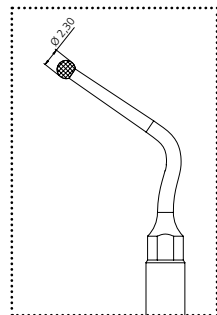
micrometric osteotomy or osteoplasty

→ CLINICAL APPLICATION

non-traumatic bone defect preparation in resective periodontal surgery

→ OT14

osteoplasty and osteotomy insert



Ø 2.3 – diamond grain size 150 µm



→ CUTTING ACTION

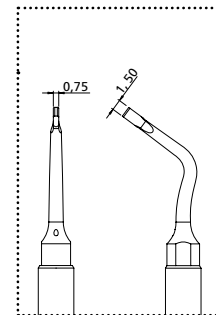
micrometric osteotomy or osteoplasty

→ CLINICAL APPLICATION

non-traumatic bone defect preparation in resective periodontal surgery

→ SLO-H

sinus bony window osteotomy insert



→ CUTTING ACTION

high precision osteotomy

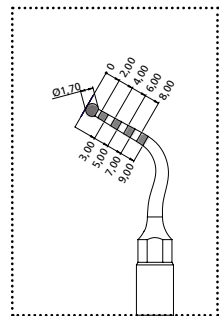
→ CLINICAL APPLICATION

to finalize the bone window osteotomy
to gain access to the sinus membrane



→ PL1

osteoplasty and osteotomy insert



→ CUTTING ACTION

micrometric osteotomy or osteoplasty

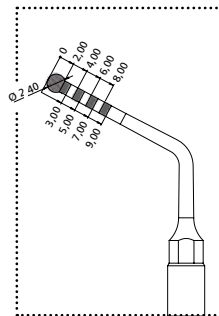
→ CLINICAL APPLICATION

sinus floor reaching and safe bony ring removal during crestal sinus lift procedure (PIEZO-LIFT)



→ PL2

osteoplasty and osteotomy insert

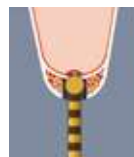


→ CUTTING ACTION

micrometric osteotomy or osteoplasty

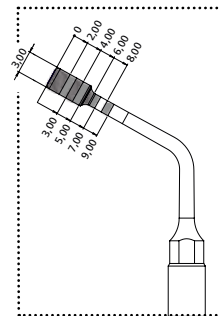
→ CLINICAL APPLICATION

sinus floor consumption and initial membrane elevation during crestal sinus lift procedure (PIEZO-LIFT)



→ PL3

osteoplasty and osteotomy insert

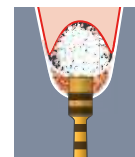


→ CUTTING ACTION

micrometric osteotomy or osteoplasty

→ CLINICAL APPLICATION

removal of the sinus basal cortex and elevation of the sinus membrane during crestal sinus lift procedure (PIEZO-LIFT)



→ OP1

scraper



→ CUTTING ACTION

high efficiency bone osteoplasty

→ CLINICAL APPLICATION

bone remodelling and harvesting of bone chips

→ OP2

back action scalpel



→ CUTTING ACTION

osteoplasty

→ CLINICAL APPLICATION

bone osteotomy, remodelling and removal of inflammatory tissue

46

→ OP3

principal osteoplasty insert



→ CUTTING ACTION

universal osteoplasty

→ CLINICAL APPLICATION

periodontal osteotomy, crown lengthening, bone chips harvesting, inflammatory tissue removal (cyst, etc.)

→ OP3A

principal osteoplasty insert



→ CUTTING ACTION

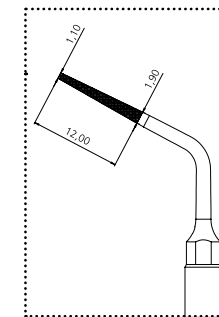
universal osteoplasty

→ CLINICAL APPLICATION

periodontal osteotomy, crown lengthening, bone chips harvesting, inflammatory tissue removal (cyst, etc.)

→ OP4

crown lengthening file



diamond grain size 126 µm



→ CUTTING ACTION

micro-osteoplasty

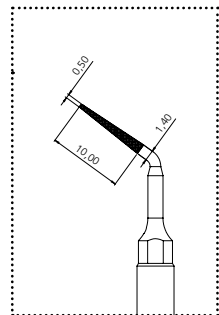
→ CLINICAL APPLICATION

interproximal osteoplasty and root planing

47

→ OP5

root debridement insert



diamond grain size 30 µm



→ CUTTING ACTION

micro-osteoplasty

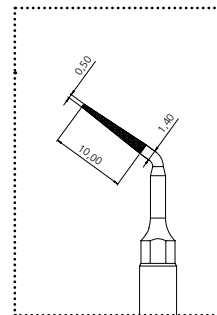
→ CLINICAL APPLICATION

root debridement and root planing during resective and regenerative periodontal surgery

48

→ OP5A

root debridement insert



diamond grain size 90 µm



→ CUTTING ACTION

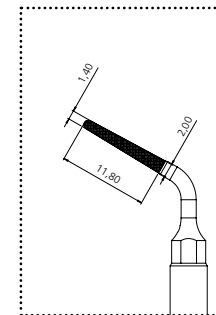
micro-osteoplasty

→ CLINICAL APPLICATION

root debridement and root planing during resective and regenerative periodontal surgery

→ OP6

micro-root-preparation



diamond grain size 126 µm



→ CUTTING ACTION

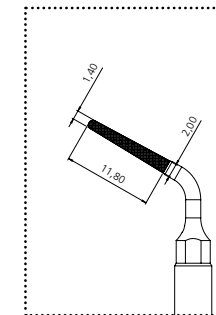
micro-root preparation

→ CLINICAL APPLICATION

root preparation in periodontal surgery

→ OP6A

micro-root-preparation



diamond grain size 30 µm



→ CUTTING ACTION

micro-root preparation

→ CLINICAL APPLICATION

root preparation in periodontal surgery

49

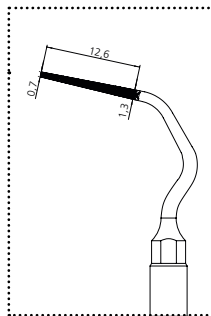
→ OP7

endodontic osteoplasty insert



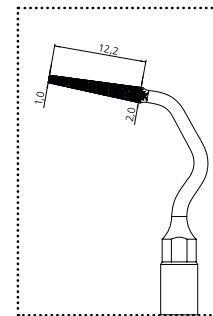
→ OP8*

crown lengthening file / perio file



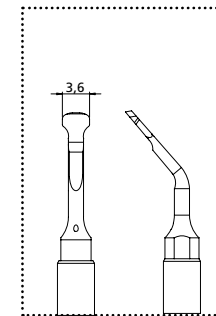
→ OP9

crown lengthening file / perio file



→ SLC

osteoplasty insert



→ CUTTING ACTION

micro-osteoplasty

→ CLINICAL APPLICATION

peri-apical maxillary bone osteotomy access, inflammatory tissue removal

→ CUTTING ACTION

micro-osteoplasty

→ CLINICAL APPLICATION

Interproximal osteoplasty without damaging adjacent root surfaces

→ CUTTING ACTION

micro-root preparation

→ CLINICAL APPLICATION

Interproximal osteoplasty without damaging adjacent root surfaces

→ CUTTING ACTION

universal osteoplasty

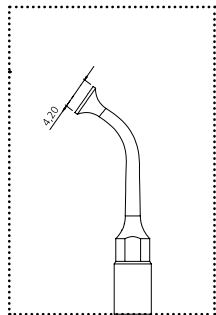
→ CLINICAL APPLICATION

sinus vestibular wall consumption to gain the membrane access; bone chips harvesting, inflammatory tissue removal



EL1

sinus membrane separator



CUTTING ACTION

schneiderian membrane separation from bony walls

CLINICAL APPLICATION

separation of the sinus membrane, 2 mm around the frame of bony window

EL2

sinus membrane separator angled at 100°



CUTTING ACTION

non-cutting elevator of the sinus membrane

CLINICAL APPLICATION

separation of the sinus membrane in internal zones

EL3

sinus membrane separator angled at 140°



CUTTING ACTION

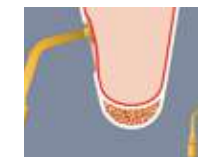
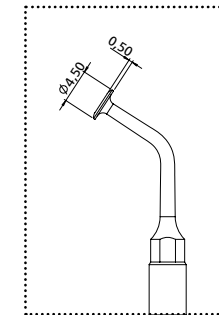
non-cutting elevator of the sinus membrane

CLINICAL APPLICATION

separation of the sinus membrane in internal zones

SLS

sinus membrane separator



CUTTING ACTION

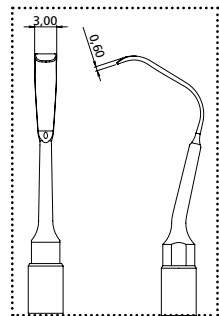
sinus membrane separator

CLINICAL APPLICATION

sinus membrane separation from the bony window margins

→ SLE1

sinus membrane elevator



→ CUTTING ACTION

elevator to cut Sharpey's fibers from the endosteum

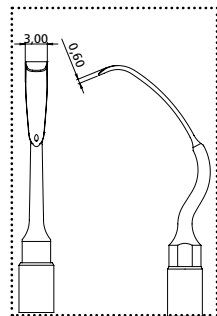
→ CLINICAL APPLICATION

sinus membrane elevation from the sinus floor



→ SLE2

sinus membrane elevator



→ CUTTING ACTION

elevator to cut Sharpey's fibers from the endosteum

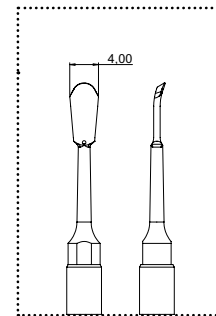
→ CLINICAL APPLICATION

sinus membrane elevation from the palatal wall



→ PR1

piezoelectric flap reflection, 4 mm width



→ CUTTING ACTION

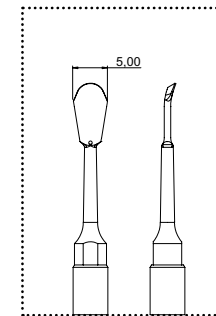
periosteum elevator

→ CLINICAL APPLICATION

subperiosteal preparation

→ PR2

piezoelectric flap reflection, 5 mm width



→ CUTTING ACTION

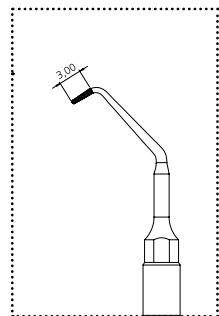
periosteum elevator

→ CLINICAL APPLICATION

subperiosteal preparation

→ EN1

diamond-coated endo apical debrider 3 mm



diamond grain size 30 µm



→ CUTTING ACTION

efficient canal cleaning

→ CLINICAL APPLICATION

apical root debridement

→ EN2

smooth endo apical debrider 3 mm



→ CUTTING ACTION

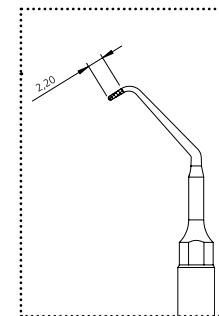
gentle canal cleaning

→ CLINICAL APPLICATION

gentle apical root debridement

→ EN3

diamond-coated endo apical debrider 2.2 mm



diamond grain size 30 µm



→ CUTTING ACTION

efficient canal cleaning

→ CLINICAL APPLICATION

apical root debridement

→ EN4

smooth endo apical debrider 2.2 mm



→ CUTTING ACTION

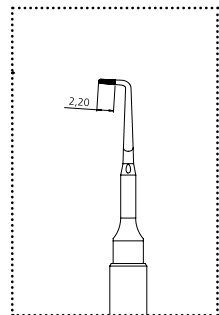
gentle canal cleaning

→ CLINICAL APPLICATION

gentle apical root debridement

→ EN5R

right angled, diamond-coated endo apical debrider 2.2 mm



diamond grain size 30 µm



→ CUTTING ACTION

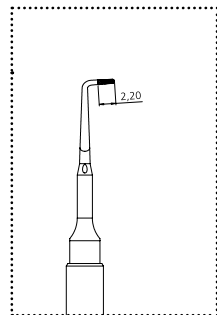
efficient canal cleaning

→ CLINICAL APPLICATION

apical root debridement

→ EN5L

left angled, diamond-coated endo apical debrider 2.2 mm



diamond grain size 30 µm



→ CUTTING ACTION

efficient canal cleaning

→ CLINICAL APPLICATION

apical root debridement

→ EN6R

right angled, smooth endo apical debrider 2.2 mm



→ CUTTING ACTION

efficient canal cleaning

→ CLINICAL APPLICATION

apical root debridement

→ EN6L

left angled, smooth endo apical debrider 2.2 mm



→ CUTTING ACTION

efficient canal cleaning

→ CLINICAL APPLICATION

apical root debridement

→ EX1

principal extraction scalpel



→ CUTTING ACTION

delicate osteotomy

→ CLINICAL APPLICATION

to cut off the ankylosis, root fraction techniques

→ EX2

angled extraction scalpel



→ CUTTING ACTION

micrometric osteotomy

→ CLINICAL APPLICATION

analogue to EX1 in the posterior regions

→ EX3

angled extraction scalpel



→ CUTTING ACTION

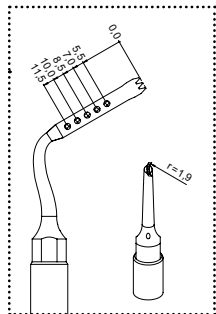
micrometric osteotomy

→ CLINICAL APPLICATION

analogue to EX1 in the posterior regions

EXP3-R

explantations

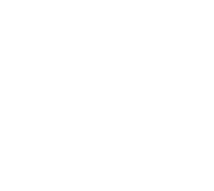
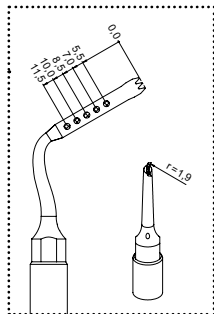


→ CUTTING ACTION
peri-implant osteotomy

→ CLINICAL APPLICATION
explantations

EXP3-L

explantations

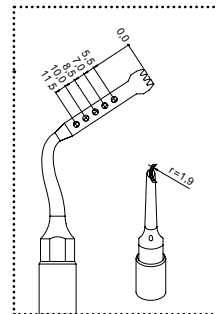


→ CUTTING ACTION
peri-implant osteotomy

→ CLINICAL APPLICATION
explantations

EXP4-R

explantations

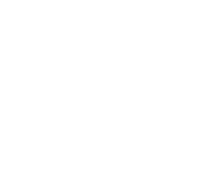
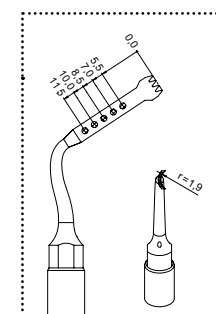


→ CUTTING ACTION
peri-implant osteotomy

→ CLINICAL APPLICATION
explantations

EXP4-L

explantations



→ CUTTING ACTION
peri-implant osteotomy

→ CLINICAL APPLICATION
explantations

→ PS1

periodontal curette



→ CUTTING ACTION

gentle scaling

→ CLINICAL APPLICATION

root scaling

→ PP1

principal root planing insert



→ CUTTING ACTION

root surface micro-smoothing

→ CLINICAL APPLICATION

root planing

→ PS2

principal periodontal scaler



→ CUTTING ACTION

powerful scaling

→ CLINICAL APPLICATION

scaling and inflammatory tissue removal fractured root apex extraction

→ PS6

angled curette



→ CUTTING ACTION

gentle scaling

→ CLINICAL APPLICATION

root scaling

→ PP10

gentle perio anatomic insert



→ CUTTING ACTION

root surface micro-smoothing

→ CLINICAL APPLICATION

gentle subgingival concretions removal



→ PP11

left and right angled, gentle perio anatomic insert



→ CUTTING ACTION

root surface micro-smoothing

→ CLINICAL APPLICATION

gentle subgingival concretions removal



→ PP12

left and right angled, gentle perio anatomic insert



→ CUTTING ACTION

root surface micro-smoothing

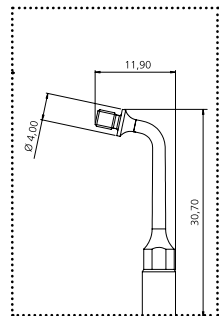
→ CLINICAL APPLICATION

gentle subgingival concretions removal



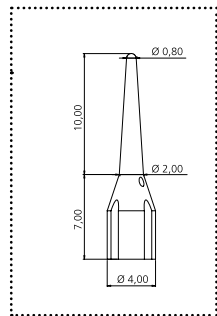
→ ICP + IC1

implant cleaning



→ ICP

tip holder ICP



→ IC1

implant cleaning tip IC1 can be easily tightened without special tools and is fully autoclavable

→ IMPLANT CLEANING SET P
The set consists of a tipholder ICP and 5 tips IC1



→ CUTTING ACTION

gentle and safe cleaning action of the implant surface

→ CLINICAL APPLICATION

efficient and soft cleaning of implants and restorations

→ CROWN PREP TIPS

preparation and finishing of subgingival margins



dynamometric wrench K7



key AB1

tipholder DB2 with crown prep tip



→ CHAMFER TECHNIQUE

→ LENGTH 10 MM → DIAMOND COATING

diameter	D120	D90	D60
1.2 mm		TA12D90	TA12D60
1.4 mm	TA14D120	TA14D90	TA14D60
1.6 mm	TA16D120	TA16D90	TA16D60

→ TA14D60

crown prep tip

→ CUTTING ACTION

micro-smoothing

→ CLINICAL APPLICATION

ultrasonic finishing of the cervical margin

→ BONE EXPANDERS

Dr. Sentineri's technique

→ DESCRIPTION

Only the initial portion is threaded. When the smooth coronal portion comes into contact with the bone, instead of penetrating into it, it displaces it, facilitating lateral expansion. Compatible with implantology micromotor or ratchet.

→ CLINICAL APPLICATION

- Technique for expanding the atrophic alveolar ridge
- Lateral bone condensation technique
- Alternative to the maxillary sinus elevation technique



Conventional expander mectron expander



→ AVAILABLE EXPANDERS

2.5 x 11.5

3.5 x 11.5

4.5 x 11.5

2.5 x 15

3.5 x 15

4.5 x 15
(Ø x length, in mm)

→ ADR16

16 mm

Long adapter for ratchet

→ ADR7

7 mm

Short adapter for ratchet

→ ADM8

Adapter for micromotor

→ RATCHET

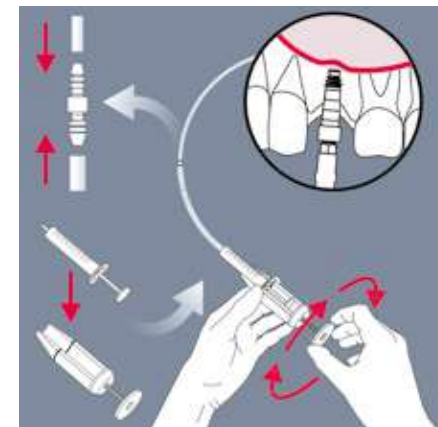
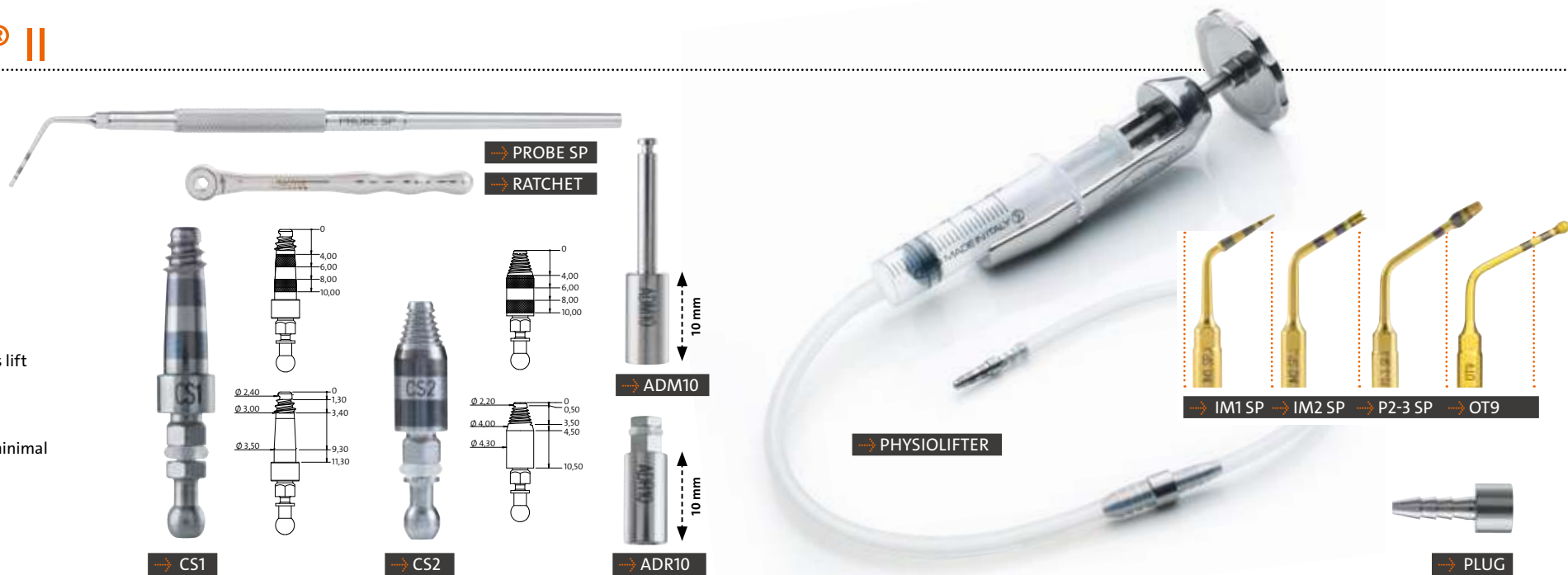
SINUS PHYSIOLIFT® II

DESCRIPTION

A minimally invasive technique of maxillary sinus elevation by the crestal approach using screw elevators and hydrodynamic pressure.

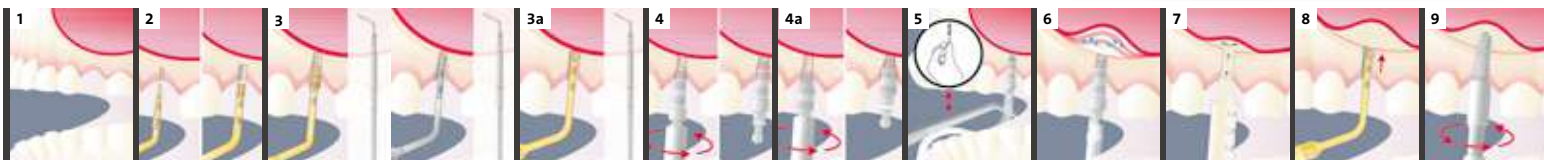
CLINICAL APPLICATION

- Elevation of the sinus membrane with micrometric precision by means of hydrodynamic pressure
- Watertight sinus elevators CS1 or CS2 for hydrodynamic sinus lift
- Atraumatic technique not requiring the use of hammer and osteotome
- Implant site preparation using PIEZOSURGERY® – the new insert P2-3 SP allows to remove the sinus basal cortex with minimal risk of penetrating into sinus cavity due to its conical shape
- Multiple implant placement can be performed
- A flapless procedure can be performed in some cases



After preparation of the site with PIEZOSURGERY®, the CS1 or CS2 elevator is introduced, and the tube connected to a syringe containing 2 ml of physiological saline solution is then inserted in the CS1 or CS2. With the SINUS PHYSIOLIFT® II protocol, it is possible to elevate the Schneiderian membrane safely, controlling the pressure of the liquid by means of the attached Physiolifter device.

SINGLE IMPLANT SINUS LIFT



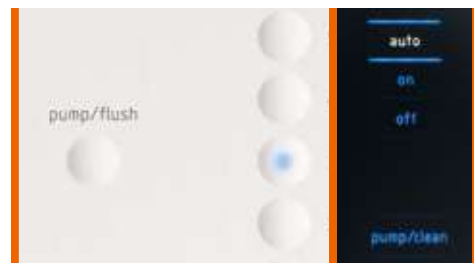
MULTIPLE IMPLANT SINUS LIFT



→ ENZYMEC

enzymatic detergent

- enzymatic solution for efficient removal of organic residue
- specifically dedicated to the "Pump/Flush" function of all PIEZOSURGERY® devices
- works perfectly in ultrasonic cleaning tanks
- easy handling thanks to the dosage measuring cap



→ PIEZOSURGERY® INSERT BOX → INSERT TRAY



- fully autoclavable
- perfect storage of all PIEZOSURGERY® inserts
- light, easy to use, compact and roomy



- stainless steel tray with depth markings
- for sterilization and storage

REFERENCE NUMBERS

ITEM/REFERENCE NUMBER	ITEM/REFERENCE NUMBER	ITEM/REFERENCE NUMBER	ITEM/REFERENCE NUMBER	ITEM/REFERENCE NUMBER
basic kit 01520006	PIN 2-2.4 AL 03740005	ADR16 03790003	insert OP6 03370006	insert EXP4-R 03400006
osteotomy kit 01520010	PIN 2-3 AL 03740006	ratchet 02270005	insert OP7 03370007	insert EXP4-L 03400007
osteoplasty kit 01520014	insert IM2A 03510001	crestal sinus elevator CS1 03920001	insert OP8 03380008	insert PS1 03180001
retro surgical kit 01520005	insert IM2P 03510002	crestal sinus elevator CS2 03920002	insert OP9 03380009	insert PP1 03180002
sinus lift lateral kit 01520023	insert IM2A-15 03510015	insert IM1 SP 03510011	insert SLC 03380013	insert PS2 03180003
piezo lift kit 01520024	insert IM2P-15 03510016	insert IM2 SP 03510022	insert EL1 03390001	insert PS6 03180005
sinus lift kit 01520002	insert IM2.8A 03510025	insert P2-3 SP 03510024	insert EL2 03390002	insert PP10 03180006
mini implant prep kit 01520016	insert IM2.8P 03510026	physiolifter 02900097	insert EL3 03390003	insert PP11 03180007
implant prep kit starter 01520017	insert IM3A 03510003	PROBE SP 03920003	insert SLS 03390006	insert PP12 03180008
implant prep kit 01520018	insert IM3P 03510004	ADM10 03790004	insert SLE1 03390007	tip IC1 (5 pieces) 02900112
implant prep kit pro 01520019	insert IM3A-15 03510017	ADR10 03790005	insert SLE2 03390008	implant cleaning set P (ICP and 5 x IC1) 01520020
extraction kit 01520003	insert IM3P-15 03510018	silicone tube with tube-tube connector 02900098	insert PR1 03390004	crown prep kit PS (DB2, AB1 and K7) 02160010
explantation kit 01520021	insert IM3.4A 03510027	complete sealed tube 02900099	insert PR2 03390005	tipholder DB2 03570002
periodontal surgery kit 01520012	insert IM3.4P 03510028	insert tray physiolift® (small) 02900100	insert EN1 02170001	key AB1 03580001
resective perio kit 01520022	insert IM4A 03510005	insert tray physiolift® (large) 02900101	insert EN2 02170002	dynamometric wrench K7 02900081
bone expander basic kit 03770006	insert IM4P 03510006	insert MDI 1.9 03510012	insert EN3 02170005	crown prep tip TA12D60 03590001
bone expander kit pro 03770007	insert P2-3 03510020	insert MDI 2.2 03510013	insert EN4 02170006	crown prep tip TA14D60 03590002
sinus physiolift® II kit basic 03770011	insert P3-4 03510021	insert MDI 2.5 03510014	insert EN5R 02170007	crown prep tip TA16D60 03590003
sinus physiolift® II kit pro 03770012	expander 2.5 x 11.5 03780001	insert OT1 03370001	insert EN5L 02170008	crown prep tip TA12D90 03590004
insert IM1S 03510019	expander 3.5 x 11.5 03780003	insert OT1A 03370008	insert EN6R 02170009	crown prep tip TA14D90 03590005
PIN IM1 03740002	expander 4.5 x 11.5 03780005	insert OT2 03370002	insert EN6L 02170010	crown prep tip TA16D90 03590006
PIN IM1S 03740007	expander 2.5 x 15 03780002	insert OT3 03370003	insert EX1 03400001	crown prep tip TA14D120 03590007
PIN 2-2.4 03740003	expander 3.5 x 15 03780004	insert OT4 03370004	insert EX2 03400002	crown prep tip TA16D120 03590008
PIN 2-3 03740001	expander 4.5 x 15 03780006	insert OT5 03370005	insert EX3 03400003	Enzymec bottle (1 liter) 03900004
insert IM1 AL 03510010	ADM8 03790001	insert OT5A 03370009	insert EXP3-R 03400004	Enzymec 4-bottle pac. (4 liter) 03900004Bx
PIN IM1 AL 03740004	ADR7 03790002	insert OT5B 03370010	insert OP6 03380006	

mectron s.p.a.,
via Loreto 15/A, 16042 Carasco (Ge), Italia,
tel +39 0185 35361, fax +39 0185 351374

→ www.mectron.com or mectron@mectron.com

© Copyright mectron S.p.A., Carasco, Italy
All rights reserved. Texts, pictures and graphics of mectron brochures are protected by copyright
and other protection laws. Without written approval of mectron S.p.A. the contents may not be
copied, distributed, changed or made available to third parties for commercial purposes.

