



SHINING 3D®

AUTOSCAN-DS-EX PRO

DENTAL 3D SCANNER



AUTOSCAN-DS-EX PRO

SPECIALIZES IN DENTAL 3D SCANNING

AutoScan-DS-EX Pro is a multi-functional 3D dental scanner independently developed and manufactured by SHINING 3D, specializing in data capturing for dental restoration, orthodontics and implantology.

UPGRADED SCAN SPEED

With increased scan speed, a single jaw scan can be finished in 12 seconds. The entire process of a separate-die order can be completed within 2 minutes and a non-separated-die order within 2.5 minutes.

OPTIMIZED NON-SEPARATED MODEL SCAN

Intelligent path planning for non-separated model scan ensures better scan results and higher efficiency.

BETTER ARTICULATOR SCAN

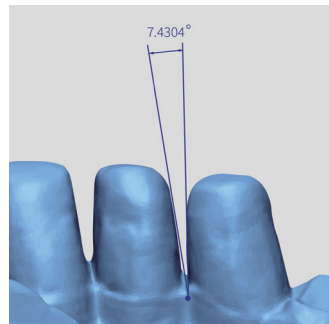
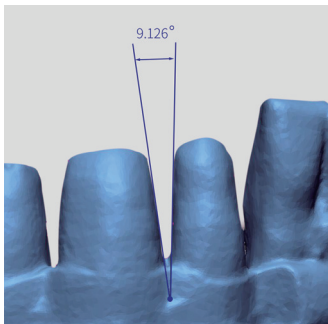
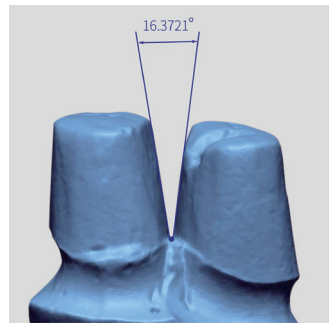
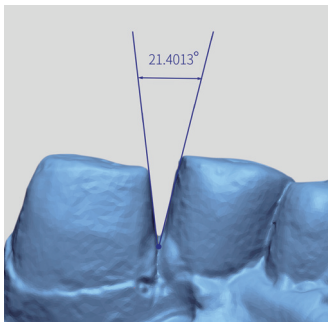
Two scanning modes are supported for articulator scan. Apart from the existing static scanning mode, a new dynamic scan mode is added, which can capture more of full jaw model to improve further occlusion precision. At the same time, it is also easy to operate, resulting in higher efficiency.

NEW ALL-IN-ONE SCAN

This new all-in-one scan method allows scan of quadrant models, dies at the same time.

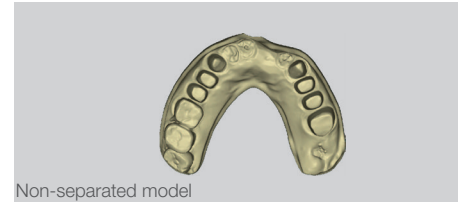
MODULAR DESIGN

More convenient for maintenance and possible for future upgrade.



APPLICATIONS

AutoScan-DS-EX Pro supports multiple dental scan applications, including wax-up, abutment, die, plaster model, impression, articulator and texture.



TECHNICAL SPECIFICATIONS

AUTOSCAN-DS-EX PRO

Camera Resolution	1.3 MP
Accuracy	< 10 μ m
Scan Time	8s for bite scan; 12s for upper/lower jaw scan; 12s for 1-4 dies scan; 21s for 5-8 eight dies scan; 58s for impression scan
Output Format	STL, OBJ, PLY
Light Source	Blue light
Dimensions	260x270x420 mm
Weight	5 kg
Interface	USB 3.0
Power Supply	DC24V

* Notice: SHINING 3D reserves the right to explain any alteration of the specifications and pictures.